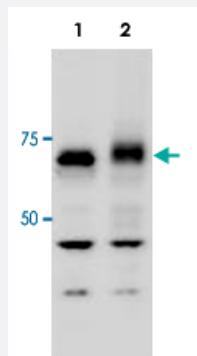


ATG13 polyclonal antibody

Catalog # PAB19949 Size 100 ug

Applications



Western Blot (Cell lysate)

Western blot analysis of 293T with ATG13 polyclonal antibody (Cat # PAB19949) at 1 ug/mL dilution. Lane 1: kinase-dead hypophosphorylated Ulk1-K46A mutant + ATG13; Lane 2: 293T cells engineered to coexpress Ulk1 and Atg13 (Ulk1 + Atg13).

Specification

Product Description	Rabbit polyclonal antibody raised against synthetic peptide of ATG13.
Immunogen	A synthetic peptide corresponding to residues surrounding S318 of human ATG13.
Host	Rabbit
Theoretical MW (kDa)	56.6
Reactivity	Human
Specificity	A BLAST analysis was used to suggest cross reactivity with ATG13 from human based on 100% sequence homology with the immunogen. Reactivity against homologues from other sources is not known.
Form	Liquid
Purification	Immunoaffinity purification
Recommend Usage	ELISA (1:220000-1:250000) Western Blot (1:1000) The optimal working dilution should be determined by the end user.

Storage Buffer	In 20 mM KH ₂ PO ₄ , 150 mM NaCl, pH 7.2 (0.01% sodium azide)
Storage Instruction	Store at 4°C. For long term storage store at -20°C. Aliquot to avoid repeated freezing and thawing.
Note	This product contains sodium azide: a POISONOUS AND HAZARDOUS SUBSTANCE which should be handled by trained staff only.

Applications

- Western Blot (Cell lysate)

Western blot analysis of 293T with ATG13 polyclonal antibody (Cat # PAB19949) at 1 ug/mL dilution. Lane 1: kinase-dead hypophosphorylated Ulk1-K46A mutant + ATG13; Lane 2: 293T cells engineered to coexpress Ulk1 and Atg13 (Ulk1 + Atg13).

- Enzyme-linked Immunoabsorbent Assay

Gene Info — ATG13

Entrez GeneID	9776
Gene Name	ATG13
Gene Alias	KIAA0652
Gene Description	ATG13 autophagy related 13 homolog (S. cerevisiae)
Gene Ontology	Hyperlink
Other Designations	autophagy-related protein 13