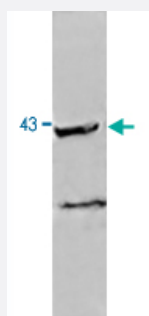


# NEU2 polyclonal antibody

Catalog # PAB19939      Size 100 ug

## Applications



### Western Blot (Recombinant protein)

Western blot analysis of recombinant protein with NEU2 polyclonal antibody (Cat # PAB19939) at 1:500 dilution.

## Specification

<b>Product Description</b>	Rabbit polyclonal antibody raised against synthetic peptide of NEU2.
<b>Immunogen</b>	A synthetic peptide corresponding to amino acids 110-124 of human NEU2.
<b>Host</b>	Rabbit
<b>Reactivity</b>	Human
<b>Specificity</b>	This antibody reacts with human Neu2. Based on sequence we expect this antibody to react with neuraminidase from other sources, although specific reactivity has not been confirmed. Cross-reactivity against Neu1 has not yet been established. Neuraminidases are highly conserved in mammals and therefore cross reactivity is expected with mouse and rat Neu2.
<b>Form</b>	Liquid
<b>Purification</b>	Immunoaffinity purification
<b>Recommend Usage</b>	ELISA (1:10000-1:50000) Western Blot (1:500- 1:2000) The optimal working dilution should be determined by the end user.
<b>Storage Buffer</b>	In 20 mM KH <sub>2</sub> PO <sub>4</sub> , 150 mM NaCl, pH 7.2 (0.01% sodium azide)

**Storage Instruction**

Store at 4°C. For long term storage store at -20°C.  
Aliquot to avoid repeated freezing and thawing.

**Note**

This product contains sodium azide: a POISONOUS AND HAZARDOUS SUBSTANCE which should be handled by trained staff only.

## Applications

- Western Blot (Recombinant protein)

Western blot analysis of recombinant protein with NEU2 polyclonal antibody (Cat # PAB19939) at 1:500 dilution.

- Immunocytochemistry

- Immunoprecipitation

- Enzyme-linked Immunoabsorbent Assay

## Gene Info — NEU2

**Entrez GeneID**[4759](#)**Gene Name**

NEU2

**Gene Alias**

MGC129579, SIAL2

**Gene Description**

sialidase 2 (cytosolic sialidase)

**Omim ID**[605528](#)**Gene Ontology**[Hyperlink](#)**Gene Summary**

This gene belongs to a family of glycohydrolytic enzymes which remove sialic acid residues from glycoproteins and glycolipids. Expression studies in COS7 cells confirmed that this gene encode s a functional sialidase. Its cytosolic localization was demonstrated by cell fractionation experiments. [provided by RefSeq]

**Other Designations**

N-acetyl-alpha-neuraminidase 2|OTTHUMP00000164374|cytosolic sialidase|neuraminidase 2|sialidase 2

## Publication Reference

- [Association of cytosolic sialidase Neu2 with plasma membrane enhances Fas-mediated apoptosis by impairing PI3K-Akt/mTOR-mediated pathway in pancreatic cancer cells.](#)

Nath S, Mandal C, Chatterjee U, Mandal C.

Cell Death & Disease 2018 Feb; 9(2):210.

Application: IHC-P, WB-Tr, Human, AsPC1, MIAPaCa2 cells, Human pancreatic cancer

## Pathway

- [Other glycan degradation](#)
- [Sphingolipid metabolism](#)