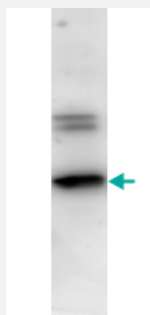


Tobacco Etch Virus Protease polyclonal antibody

Catalog # PAB19931

Size 100 ug

Applications



Western Blot (Recombinant protein)

Western blot analysis of recombinant protein with Tobacco Etch Virus Protease polyclonal antibody (Cat # PAB19931) at 1:1000 dilution.

Specification

Product Description Rabbit polyclonal antibody raised against partial recombinant Tobacco Etch Virus Protease.

Immunogen Recombinant His fusion protein corresponding to Tobacco Etch Virus Protease.

Host Rabbit

Theoretical MW (kDa) 27

Specificity Assay by western blot showed no reactivity to MBP.

Form Liquid

Purification Protein A purification

Recommend Usage ELISA (1:1500-1:27000)
WB (1:500)
The optimal working dilution should be determined by the end user.

Storage Buffer In 20 mM KH₂PO₄, 150 mM NaCl, pH 7.2 (0.01% sodium azide)

Storage Instruction Store at 4°C. For long term storage store at -20°C.
Aliquot to avoid repeated freezing and thawing.

Note

This product contains sodium azide: a POISONOUS AND HAZARDOUS SUBSTANCE which should be handled by trained staff only.

Applications

- Western Blot (Recombinant protein)

Western blot analysis of recombinant protein with Tobacco Etch Virus Protease polyclonal antibody (Cat # PAB19931) at 1:1000 dilution.

Publication Reference

- [Generation of a live attenuated influenza A vaccine by proteolysis targeting.](#)

Longlong Si, Quan Shen, Jing Li, Li Chen, Jinying Shen, Xue Xiao, Haiqing Bai, Tang Feng, Adam Yongxin Ye, Le Li, Chunhe Zhang, Zhen Li, Ping Wang, Crystal Yuri Oh, Atiq Nurani, Siwen Niu, Chengxin Zhang, Xiaoqiong Wei, Wanqiong Yuan, Hao Liao, Xiaojie Huang, Ning Wang, Wen-Xia Tian, Hongwei Tian, Li Li, Xiaoheng Liu, Roberto Plebani.

Nature Biotechnology 2022 Sep; 40(9):1370.

Application: WB-Tr, Human, HKE293T, MDCK.2 cells

- [Evaluation of the lower protein limit in the budding yeast *Saccharomyces cerevisiae* using TIPI-gTOW.](#)

Sasabe M, Shintani S, Kintaka R, Kaizu K, Makanae K, Moriya H.

BMC Systems Biology 2014 Jan; 8:2.

Application: WB-Ce, Yeast, *Saccharomyces cerevisiae* strain BY4741, YSM005