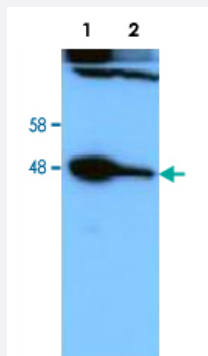


HICE1 polyclonal antibody

Catalog # PAB19929 Size 100 uL

Applications



Western Blot (Cell lysate)

Western blot analysis of S phase HeLa cells with HICE1 polyclonal antibody (Cat # PAB19929) at 1:10000 dilution. Lane 1: lysates from sh-Luciferase lentivirus-infected cells as control; Lane 2: lysates from sh-HICE1 RNAi-treated lentivirus-infected cells.

Specification

Product Description	Rabbit polyclonal antibody raised against full length recombinant HICE1.
Immunogen	Recombinant GST fusion protein corresponding to full length human HICE1.
Host	Rabbit
Theoretical MW (kDa)	65
Reactivity	Human
Specificity	This antibody reacts with endogenous Hice1 protein. A BLAST analysis was used to suggest reactivity with Hice1 from human based on a 100% homology with the immunizing sequence. Expect reactivity with Hice1 from chimpanzee, Sumatran orangutan based on a 90% homology with the immunizing sequence.
Form	Liquid
Purification	Immunoaffinity purification
Recommend Usage	ELISA (1:250000) Western Blot (1:10000) The optimal working dilution should be determined by the end user.

Storage Buffer	In 20 mM KH ₂ PO ₄ , 150 mM NaCl, pH 7.2 (0.01% sodium azide)
Storage Instruction	Store at 4°C. For long term storage store at -20°C. Aliquot to avoid repeated freezing and thawing.
Note	This product contains sodium azide: a POISONOUS AND HAZARDOUS SUBSTANCE which should be handled by trained staff only.

Applications

- Western Blot (Cell lysate)

Western blot analysis of S phase HeLa cells with HICE1 polyclonal antibody (Cat # PAB19929) at 1:10000 dilution. Lane 1: lysates from sh-Luciferase lentivirus-infected cells as control; Lane 2: lysates from sh-HICE1 RNAi-treated lentivirus-infected cells.

- Enzyme-linked Immunoabsorbent Assay

Gene Info — HICE1

Entrez GeneID	93323
Gene Name	HICE1
Gene Alias	MGC20533, NY-SAR-48
Gene Description	HEC1/NDC80 interacting, centrosome associated 1
Gene Ontology	Hyperlink
Gene Summary	O
Other Designations	Hec1-interacting and centrosome-associated 1 sarcoma antigen NY-SAR-48