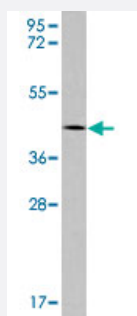


# SIRT6 polyclonal antibody

Catalog # PAB1985

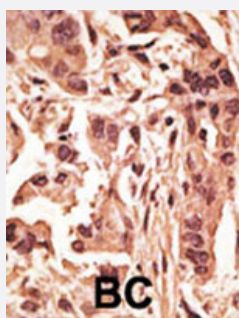
Size 400 uL

## Applications



### Western Blot (Tissue lysate)

Western blot analysis of mouse stomach tissue lysate (35 ug/lane) with SIRT6 polyclonal antibody (Cat # PAB1985).



### Immunohistochemistry (Formalin/PFA-fixed paraffin-embedded sections)

Formalin-fixed and paraffin-embedded human breast cancer tissue reacted with SIRT6 polyclonal antibody (Cat # PAB1985), which was peroxidase-conjugated to the secondary antibody, followed by DAB staining. This data demonstrates the use of this antibody for immunohistochemistry; clinical relevance has not been evaluated.

## Specification

<b>Product Description</b>	Rabbit polyclonal antibody raised against synthetic peptide of SIRT6.
<b>Immunogen</b>	A synthetic peptide (conjugated with KLH) corresponding to C-terminus of human SIRT6.
<b>Host</b>	Rabbit
<b>Reactivity</b>	Human, Mouse
<b>Form</b>	Liquid
<b>Purification</b>	Protein G purification

<b>Recommend Usage</b>	Western Blot (1:1000) Immunohistochemistry (1:50-100) The optimal working dilution should be determined by the end user.
<b>Storage Buffer</b>	In PBS (0.09% sodium azide)
<b>Storage Instruction</b>	Store at 4°C. For long term storage store at -20°C. Aliquot to avoid repeated freezing and thawing.
<b>Note</b>	This product contains sodium azide: a POISONOUS AND HAZARDOUS SUBSTANCE which should be handled by trained staff only.

## Applications

- Western Blot (Tissue lysate)

Western blot analysis of mouse stomach tissue lysate (35 ug/lane) with SIRT6 polyclonal antibody (Cat # PAB1985).

- Immunohistochemistry (Formalin/PFA-fixed paraffin-embedded sections)

Formalin-fixed and paraffin-embedded human breast cancer tissue reacted with SIRT6 polyclonal antibody (Cat # PAB1985), which was peroxidase-conjugated to the secondary antibody, followed by DAB staining. This data demonstrates the use of this antibody for immunohistochemistry; clinical relevance has not been evaluated.

## Gene Info — SIRT6

<b>Entrez GeneID</b>	<a href="#">51548</a>
<b>Protein Accession#</b>	<a href="#">NP_057623:Q8N6T7</a>
<b>Gene Name</b>	SIRT6
<b>Gene Alias</b>	SIR2L6
<b>Gene Description</b>	sirtuin (silent mating type information regulation 2 homolog) 6 (S. cerevisiae)
<b>Omim ID</b>	<a href="#">606211</a>
<b>Gene Ontology</b>	<a href="#">Hyperlink</a>
<b>Gene Summary</b>	This gene encodes a member of the sirtuin family of proteins, homologs to the yeast Sir2 protein. Members of the sirtuin family are characterized by a sirtuin core domain and grouped into four classes. The functions of human sirtuins have not yet been determined; however, yeast sirtuin proteins are known to regulate epigenetic gene silencing and suppress recombination of rDNA. Studies suggest that the human sirtuins may function as intracellular regulatory proteins with mono-ADP-ribosyltransferase activity. The protein encoded by this gene is included in class IV of the sirtuin family. [provided by RefSeq]

## Other Designations

sir2-related protein type 6|sirtuin 6|sirtuin type 6

## Publication Reference

- [Complete sequencing and characterization of 21,243 full-length human cDNAs.](#)

Ota T, Suzuki Y, Nishikawa T, Otsuki T, Sugiyama T, Irie R, Wakamatsu A, Hayashi K, Sato H, Nagai K, Kimura K, Makita H, Sekine M, Obayashi M, Nishi T, Shibahara T, Tanaka T, Ishii S, Yamamoto J, Saito K, Kawai Y, Isono Y, Nakamura Y, Nagahari K, Murakami K, Yasuda T, Iwayanagi T, Wagatsuma M, Shiratori A, Sudo H, Hosoiri T, Kaku Y, Kodaira H, Kondo H, Sugawara M, Takahashi M, Kanda K, Yokoi T, Furuya T, Kikkawa E, Omura Y, Abe K, Kamihara K, Katsuta N, Sato K, Tanikawa M, Yamazaki M, Ninomiya K

Nature Genetics 2003 Dec; 36(1):40.

- [Generation and initial analysis of more than 15,000 full-length human and mouse cDNA sequences.](#)

Strausberg RL, Feingold EA, Grouse LH, Derge JG, Klausner RD, Collins FS, Wagner L, Shenmen CM, Schuler GD, Altschul SF, Zeeberg B, Buetow KH, Schaefer CF, Bhat NK, Hopkins RF, Jordan H, Moore T, Max SI, Wang J, Hsieh F, Diatchenko L, Marusina K, Farmer AA, Rubin GM, Hong L, Stapleton M, Soares MB, Bonaldo MF, Casavant TL, Scheetz TE, Brownstein MJ, Ustin TB, Toshiyuki S, Carninci P, Prange C, Raha SS, Loquellano NA, Peters GJ, Abramson RD, Mullahy SJ, Bosak SA, McEwan PJ, McKernan KJ, Malek JA,

PNAS 2002 Dec; 99(26):16899.

- [Phylogenetic classification of prokaryotic and eukaryotic Sir2-like proteins.](#)

Frye RA.

Biochemical and Biophysical Research Communications 2000 Jul; 273(2):793.