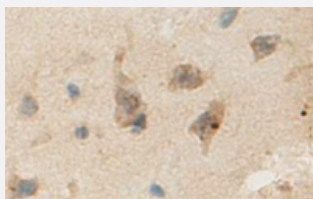


ANLN polyclonal antibody

Catalog # PAB19831 Size 100 ug

Applications



Immunohistochemistry (Formalin/PFA-fixed paraffin-embedded sections)

Immunohistochemical staining of formalin-fixed paraffin-embedded human brain showing staining with ANLN polyclonal antibody (Cat # PAB19831) at 1:100 dilution.

Specification

Product Description	Rabbit polyclonal antibody raised against synthetic peptide of ANLN.
Immunogen	A synthetic peptide corresponding to internal region of human ANLN.
Host	Rabbit
Reactivity	Human
Form	Liquid
Purification	Peptide affinity purification
Recommend Usage	ELISA (1:1000-1:10000) Immunohistochemistry (1:100-500) The optimal working dilution should be determined by the end user.
Storage Buffer	In serum (0.02% sodium azide)
Storage Instruction	Store at 4°C for three months. For long term storage store at -20°C. Aliquot to avoid repeated freezing and thawing.
Note	This product contains sodium azide: a POISONOUS AND HAZARDOUS SUBSTANCE which should be handled by trained staff only.

Applications

- Immunohistochemistry (Formalin/PFA-fixed paraffin-embedded sections)

Immunohistochemical staining of formalin-fixed paraffin-embedded human brain showing staining with ANLN polyclonal antibody (Cat # PAB19831) at 1:100 dilution.

- Enzyme-linked Immunoabsorbent Assay

Gene Info — ANLN

Entrez GeneID	54443
Protein Accession#	Q9NQW6
Gene Name	ANLN
Gene Alias	DKFZp779A055, Scraps, scra
Gene Description	anillin, actin binding protein
Gene Ontology	Hyperlink
Gene Summary	O
Other Designations	-