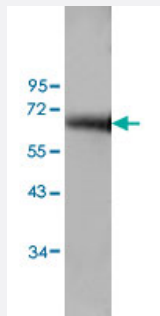


ADAM19 polyclonal antibody

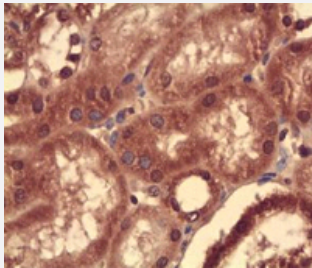
Catalog # PAB19829 Size 100 ug

Applications



Western Blot (Tissue lysate)

Western blot analysis of human kidney cells with ADAM19 polyclonal antibody (Cat # PAB19829) at 1:200 dilution.



Immunohistochemistry (Formalin/PFA-fixed paraffin-embedded sections)

Immunohistochemical staining of formalin-fixed paraffin-embedded human renal tubules showing staining with ADAM19 polyclonal antibody (Cat # PAB19829) at 1:100 dilution.

Specification

Product Description	Rabbit polyclonal antibody raised against synthetic peptide of ADAM19.
Immunogen	A synthetic peptide corresponding to 14 amino acids near C-terminus of human ADAM19.
Sequence	KVKAGTRGLQGGRC
Host	Rabbit
Reactivity	Human
Form	Liquid
Purification	Peptide affinity purification

Recommend Usage	ELISA (1:5000-1:20000) Western Blot (1:200-500) Immunohistochemistry (1:50-200) The optimal working dilution should be determined by the end user.
Storage Buffer	In serum (0.02% sodium azide)
Storage Instruction	Store at 4°C for three months. For long term storage store at -20°C. Aliquot to avoid repeated freezing and thawing.
Note	This product contains sodium azide: a POISONOUS AND HAZARDOUS SUBSTANCE which should be handled by trained staff only.

Applications

- Western Blot (Tissue lysate)

Western blot analysis of human kidney cells with ADAM19 polyclonal antibody (Cat # PAB19829) at 1:200 dilution.

- Immunohistochemistry (Formalin/PFA-fixed paraffin-embedded sections)

Immunohistochemical staining of formalin-fixed paraffin-embedded human renal tubules showing staining with ADAM19 polyclonal antibody (Cat # PAB19829) at 1:100 dilution.

- Enzyme-linked Immunoabsorbent Assay

Gene Info — ADAM19

Entrez GeneID	8728
Protein Accession#	Q9H013
Gene Name	ADAM19
Gene Alias	FKSG34, MADDAM, MLTNB
Gene Description	ADAM metallopeptidase domain 19 (meltrin beta)
Omim ID	603640
Gene Ontology	Hyperlink

Gene Summary

This gene encodes a member of the ADAM (a disintegrin and metalloprotease domain) family. Members of this family are membrane-anchored proteins structurally related to snake venom disintegrins, and have been implicated in a variety of biological processes involving cell-cell and cell-matrix interactions, including fertilization, muscle development, and neurogenesis. This member is a type I transmembrane protein and serves as a marker for dendritic cell differentiation. It has also been demonstrated to be an active metalloproteinase, which may be involved in normal physiological and pathological processes such as cells migration, cell adhesion, cell-cell and cell-matrix interactions, and signal transduction. [provided by RefSeq]

Other Designations

ADAM metalloproteinase domain 19|a disintegrin and metalloproteinase domain 19 (meltrin beta)|meltrin beta

Disease

- [Birth Weight](#)
- [Fractures](#)
- [Genetic Predisposition to Disease](#)
- [Glioblastoma](#)
- [Glioma](#)
- [Leukemia](#)
- [Lung Diseases](#)
- [Meningeal Neoplasms](#)
- [Meningioma](#)
- [Wounds and Injuries](#)