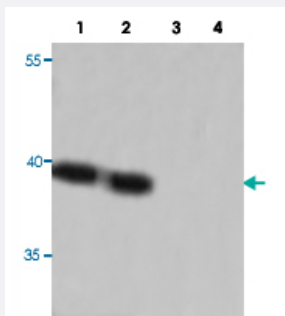


CREB3L4 polyclonal antibody

Catalog # PAB19819 Size 100 ug

Applications



Western Blot

Western blot analysis with CREB3L4 polyclonal antibody (Cat # PAB19819) at 1:200 dilution.

Lane 1, A-549. Non-peptide blocked.

Lane 2, fetal liver. Non-peptide blocked.

Lane 3, A-549. Peptide blocked.

Lane 4, fetal liver. Peptide blocked.

Specification

Product Description	Rabbit polyclonal antibody raised against synthetic peptide of CREB3L4.
Immunogen	A synthetic peptide corresponding to C-terminus of human CREB3L4.
Sequence	PSGRIRSVLHADEM
Host	Rabbit
Reactivity	Human
Form	Liquid
Recommend Usage	ELISA (1:80000) Western Blot (1:200-1000) The optimal working dilution should be determined by the end user.
Storage Buffer	In serum (0.02% sodium azide)
Storage Instruction	Store at 4°C for three months. For long term storage store at -20°C. Aliquot to avoid repeated freezing and thawing.
Note	This product contains sodium azide: a POISONOUS AND HAZARDOUS SUBSTANCE which should be handled by trained staff only.

Applications

- Western Blot

Western blot analysis with CREB3L4 polyclonal antibody (Cat # PAB19819) at 1:200 dilution.

Lane 1, A-549. Non-peptide blocked.

Lane 2, fetal liver. Non-peptide blocked.

Lane 3, A-549. Peptide blocked.

Lane 4, fetal liver. Peptide blocked.

- Enzyme-linked Immunoabsorbent Assay

Gene Info — CREB3L4

Entrez GeneID	148327
Protein Accession#	Q8TEY5
Gene Name	CREB3L4
Gene Alias	AIBZIP, ATCE1, CREB3, CREB4, JAL, hJAL
Gene Description	cAMP responsive element binding protein 3-like 4
Omim ID	607138
Gene Ontology	Hyperlink
Gene Summary	cAMP response element-binding (CREB) proteins are a family of mammalian transcription activators. For further background information on CREB proteins, see CREB1 (MIM 123810).[supplied by OMIM]
Other Designations	OTTHUMP00000035264 OTTHUMP00000035265 OTTHUMP00000035266 androgen-induced basic leucine zipper cAMP responsive element binding protein 1

Pathway

- [Melanogenesis](#)
- [Prostate cancer](#)