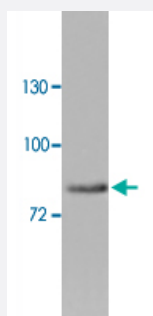


ZYX polyclonal antibody

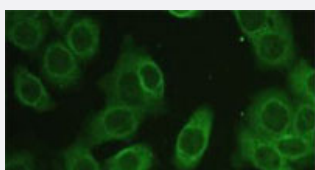
Catalog # PAB19818 Size 100 ug

Applications



Western Blot (Cell lysate)

Western blot analysis of HeLa cell lysate with ZYX polyclonal antibody (Cat # PAB19818) at 1:1000 dilution.



Immunofluorescence

Immunofluorescence staining of HeLa with ZYX polyclonal antibody (Cat # PAB19818) at 1:50 dilution.

Specification

Product Description	Rabbit polyclonal antibody raised against synthetic peptide of ZYX.
Immunogen	A synthetic peptide corresponding to 15 amino acids near internal region of human ZYX.
Host	Rabbit
Reactivity	Human
Form	Liquid
Purification	Protein A purification

Recommend Usage	ELISA (1:32000) Western Blot (1:500-1000) Immunofluorescence (1:50-1:200) The optimal working dilution should be determined by the end user.
Storage Buffer	In serum (0.02% sodium azide)
Storage Instruction	Store at 4°C for three months. For long term storage store at -20°C. Aliquot to avoid repeated freezing and thawing.
Note	This product contains sodium azide: a POISONOUS AND HAZARDOUS SUBSTANCE which should be handled by trained staff only.

Applications

- Western Blot (Cell lysate)

Western blot analysis of HeLa cell lysate with ZYX polyclonal antibody (Cat # PAB19818) at 1:1000 dilution.

- Immunofluorescence

Immunofluorescence staining of HeLa with ZYX polyclonal antibody (Cat # PAB19818) at 1:50 dilution.

- Enzyme-linked Immunoabsorbent Assay

Gene Info — ZYX

Entrez GeneID	7791
Protein Accession#	Q15942
Gene Name	ZYX
Gene Alias	ESP-2, HED-2
Gene Description	zyxin
Omim ID	602002
Gene Ontology	Hyperlink

Gene Summary

Focal adhesions are actin-rich structures that enable cells to adhere to the extracellular matrix and at which protein complexes involved in signal transduction assemble. Zyxin is a zinc-binding phosphoprotein that concentrates at focal adhesions and along the actin cytoskeleton. Zyxin has an N-terminal proline-rich domain and three LIM domains in its C-terminal half. The proline-rich domain may interact with SH3 domains of proteins involved in signal transduction pathways while the LIM domains are likely involved in protein-protein binding. Zyxin may function as a messenger in the signal transduction pathway that mediates adhesion-stimulated changes in gene expression and may modulate the cytoskeletal organization of actin bundles. Alternative splicing results in multiple transcript variants that encode the same isoform. [provided by RefSeq]

Other Designations

-

Pathway

- [Focal adhesion](#)

Disease

- [Cardiovascular Diseases](#)
- [Diabetes Mellitus](#)
- [Edema](#)