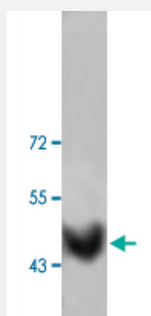


# ACTA2 polyclonal antibody

Catalog # PAB19815      Size 100 ug

## Applications



### Western Blot (Tissue lysate)

Western blot analysis of human fetal stomach tissue lysate with ACTA2 polyclonal antibody (Cat # PAB19815) at 1:200 dilution.

## Specification

<b>Product Description</b>	Rabbit polyclonal antibody raised against synthetic peptide of ACTA2.
<b>Immunogen</b>	A synthetic peptide corresponding to 15 amino acids at N-terminus of human ACTA2.
<b>Host</b>	Rabbit
<b>Reactivity</b>	Human, Mouse, Rat
<b>Form</b>	Liquid
<b>Purification</b>	Protein A purification
<b>Recommend Usage</b>	ELISA (1:8000-1:30000) Western Blot (1:200-1000) The optimal working dilution should be determined by the end user.
<b>Storage Buffer</b>	In serum (0.02% sodium azide)
<b>Storage Instruction</b>	Store at 4°C for three months. For long term storage store at -20°C. Aliquot to avoid repeated freezing and thawing.
<b>Note</b>	This product contains sodium azide: a POISONOUS AND HAZARDOUS SUBSTANCE which should be handled by trained staff only.

## Applications

- Western Blot (Tissue lysate)

Western blot analysis of human fetal stomach tissue lysate with ACTA2 polyclonal antibody (Cat # PAB19815) at 1:200 dilution.

- Enzyme-linked Immunoabsorbent Assay

## Gene Info — ACTA2

Entrez GeneID [59](#)

Protein Accession# [P62736](#)

Gene Name ACTA2

Gene Alias AAT6, ACTSA

Gene Description actin, alpha 2, smooth muscle, aorta

Omim ID [102620](#)

Gene Ontology [Hyperlink](#)

**Gene Summary** The protein encoded by this gene belongs to the actin family of proteins, which are highly conserved proteins that play a role in cell motility, structure and integrity. Alpha, beta and gamma actin isoforms have been identified, with alpha actins being a major constituent of the contractile apparatus, while beta and gamma actins are involved in the regulation of cell motility. This actin is an alpha actin that is found in skeletal muscle. Defects in this gene cause aortic aneurysm familial thoracic type 6. Multiple alternatively spliced variants, encoding the same protein, have been identified. [provided by RefSeq]

**Other Designations** OTTHUMP00000020042|alpha 2 actin|alpha-cardiac actin|growth-inhibiting gene 46

## Pathway

- [Vascular smooth muscle contraction](#)

## Disease

- [Alzheimer Disease](#)

- [Cardiovascular Diseases](#)
- [Diabetes Mellitus](#)
- [Edema](#)
- [Genetic Predisposition to Disease](#)