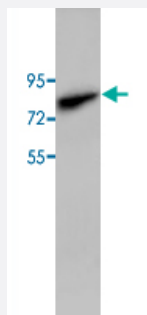


# AP1G1 polyclonal antibody

Catalog # PAB19788

Size 100 ug

## Applications



### Western Blot (Cell lysate)

Western blot analysis of HeLa cell lysate with AP1G1 polyclonal antibody (Cat # PAB19788) at 1:500 dilution.

## Specification

**Product Description** Rabbit polyclonal antibody raised against synthetic peptide of AP1G1.

**Immunogen** A synthetic peptide corresponding to internal region of human AP1G1.

**Host** Rabbit

**Reactivity** Human, Mouse, Rat

**Form** Liquid

**Purification** Peptide affinity purification

**Recommend Usage** ELISA (1:1000-1:10000)  
Western Blot (1:200-1000)  
Immunohistochemistry (1:100-500)  
The optimal working dilution should be determined by the end user.

**Storage Buffer** In serum (0.02% sodium azide)

**Storage Instruction** Store at 4°C for three months. For long term storage store at -20°C.  
Aliquot to avoid repeated freezing and thawing.

**Note**

This product contains sodium azide: a POISONOUS AND HAZARDOUS SUBSTANCE which should be handled by trained staff only.

## Applications

- Western Blot (Cell lysate)

Western blot analysis of HeLa cell lysate with AP1G1 polyclonal antibody (Cat # PAB19788) at 1:500 dilution.

- Immunohistochemistry (Formalin/PFA-fixed paraffin-embedded sections)

- Enzyme-linked Immunoabsorbent Assay

## Gene Info — AP1G1

**Entrez GeneID** [164](#)

**Protein Accession#** [O43747](#)

**Gene Name** AP1G1

**Gene Alias** ADTG, CLAPG1, MGC18255

**Gene Description** adaptor-related protein complex 1, gamma 1 subunit

**Omim ID** [603533](#)

**Gene Ontology** [Hyperlink](#)

**Gene Summary**

Adaptins are important components of clathrin-coated vesicles transporting ligand-receptor complexes from the plasma membrane or from the trans-Golgi network to lysosomes. The adaptin family of proteins is composed of four classes of molecules named alpha, beta-, beta prime- and gamma- adaptins. Adaptins, together with medium and small subunits, form a heterotetrameric complex called an adaptor, whose role is to promote the formation of clathrin-coated pits and vesicles. The protein encoded by this gene is a gamma-adaptin protein and it belongs to the adaptor complex large subunits family. Two transcript variants encoding different isoforms have been found for this gene. [provided by RefSeq]

**Other Designations**

clathrin assembly protein complex 1 gamma large chain|clathrin-associated/assembly/adaptor protein, large, gamma 1|gamma adaptin|golgi adaptor HA1/AP1 adaptin gamma subunit

## Pathway

- [Lysosome](#)

## Disease

- [Tobacco Use Disorder](#)