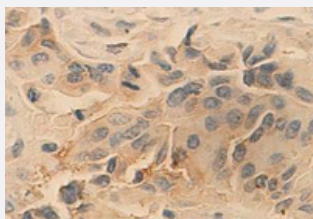


EPCAM polyclonal antibody

Catalog # PAB19785 Size 100 ug

Applications



Immunohistochemistry (Formalin/PFA-fixed paraffin-embedded sections)

Immunohistochemical staining of formalin-fixed paraffin-embedded human colon carcinoma showing staining with EPCAM polyclonal antibody (Cat # PAB19785) at 1:100 dilution.

Specification

Product Description Rabbit polyclonal antibody raised against synthetic peptide of EPCAM.

Immunogen A synthetic peptide corresponding to C-terminus of human EPCAM.

Host Rabbit

Reactivity Human

Form Liquid

Purification Peptide affinity purification

Recommend Usage ELISA (1:1000-1:10000)
Immunohistochemistry (1:50-500)
The optimal working dilution should be determined by the end user.

Storage Buffer In serum (0.02% sodium azide)

Storage Instruction Store at 4°C for three months. For long term storage store at -20°C.
Aliquot to avoid repeated freezing and thawing.

Note This product contains sodium azide: a POISONOUS AND HAZARDOUS SUBSTANCE which should be handled by trained staff only.

Applications

- Immunohistochemistry (Formalin/PFA-fixed paraffin-embedded sections)

Immunohistochemical staining of formalin-fixed paraffin-embedded human colon carcinoma showing staining with EPCAM polyclonal antibody (Cat # PAB19785) at 1:100 dilution.

- Enzyme-linked Immunoabsorbent Assay

Gene Info — EPCAM

Entrez GeneID	4072
Protein Accession#	NM_002354
Gene Name	EPCAM
Gene Alias	17-1A, 323/A3, CD326, CO-17A, CO17-1A, EGP, EGP-2, EGP34, EGP40, ESA, Ep-CAM, GA733-2, HEA125, KS1/4, KSA, M4S1, MH99, MIC18, MK-1, MOC31, TACST-1, TACSTD1, TROP1, hEGP-2
Gene Description	epithelial cell adhesion molecule
Omim ID	185535
Gene Ontology	Hyperlink
Gene Summary	This gene encodes a carcinoma-associated antigen and is a member of a family that includes at least two type I membrane proteins. This antigen is expressed on most normal epithelial cells and gastrointestinal carcinomas and functions as a homotypic calcium-independent cell adhesion molecule. The antigen is being used as a target for immunotherapy treatment of human carcinomas. Mutations in this gene result in congenital tufting enteropathy. [provided by RefSeq]
Other Designations	adenocarcinoma-associated antigen carcinoma-associated antigen GA733-2 human epithelial glycoprotein-2 membrane component, chromosome 4, surface marker (35kD glycoprotein) tumor-associated calcium signal transducer 1

Disease

- [Genetic Predisposition to Disease](#)
- [Ovarian Neoplasms](#)