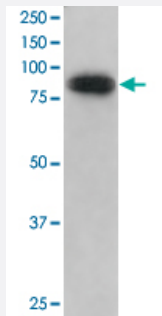


ODF2 polyclonal antibody

Catalog # PAB19753 Size 100 ug

Applications



Western Blot (Cell lysate)

ODF2 polyclonal antibody (Cat # PAB19753) (3 ug/mL) staining of C57/B6 mouse CTL cell lysate (35 ug protein in RIPA buffer). Primary incubation was 1 hour. Detected by chemiluminescence.

Data provided by Dr. J. Griffiths, University of Cambridge, UK.

Specification

| | |
|-----------------------------|--|
| Product Description | Goat polyclonal antibody raised against synthetic peptide of ODF2. |
| Immunogen | A synthetic peptide corresponding to internal region of human ODF2. |
| Sequence | CREKHQASQKENKQ |
| Host | Goat |
| Theoretical MW (kDa) | 95.4 |
| Reactivity | Mouse |
| Specificity | This antibody is expected to recognize reported isoform 1 (NP_002531.3). |
| Form | Liquid |
| Purification | Antigen affinity purification |
| Concentration | 0.5 mg/mL |
| Recommend Usage | ELISA (1:128000) Western Blot (1-3 ug/mL) The optimal working dilution should be determined by the end user. |

| | |
|---------------------|--|
| Storage Buffer | In Tris saline, pH 7.3 (0.5% BSA, 0.02% sodium azide) |
| Storage Instruction | Store at -20°C. Aliquot to avoid repeated freezing and thawing. |
| Note | This product contains sodium azide: a POISONOUS AND HAZARDOUS SUBSTANCE which should be handled by trained staff only. |

Applications

- Western Blot (Cell lysate)

ODF2 polyclonal antibody (Cat # PAB19753) (3 ug/mL) staining of C57/B6 mouse CTL cell lysate (35 ug protein in RIPA buffer). Primary incubation was 1 hour. Detected by chemiluminescence.
Data provided by Dr. J. Griffiths, University of Cambridge, UK.

- Enzyme-linked Immunoabsorbent Assay

Gene Info — ODF2

| | |
|--------------------|---|
| Entrez GeneID | 4957 |
| Protein Accession# | NP_002531.3;NP_702915.1 |
| Gene Name | ODF2 |
| Gene Alias | FLJ44866, MGC111096, MGC9034, ODF2/1, ODF2/2, ODF84 |
| Gene Description | outer dense fiber of sperm tails 2 |
| Omim ID | 602015 |
| Gene Ontology | Hyperlink |

| | |
|--------------|--|
| Gene Summary | The outer dense fibers are cytoskeletal structures that surround the axoneme in the middle piece and principal piece of the sperm tail. The fibers function in maintaining the elastic structure and recoil of the sperm tail as well as in protecting the tail from shear forces during epididymal transport and ejaculation. Defects in the outer dense fibers lead to abnormal sperm morphology and infertility. This gene encodes one of the major outer dense fiber proteins. Multiple protein isoforms are encoded by transcript variants of this gene; however, not all isoforms and variants have been fully described. [provided by RefSeq] |
|--------------|--|

| | |
|--------------------|--|
| Other Designations | OTTHUMP00000022273 OTTHUMP00000022274 cenexin 1 outer dense fiber of sperm tails, 84-kD outer dense fibre of sperm tails 2 sperm tail structural protein |
|--------------------|--|

Disease

- [Tobacco Use Disorder](#)