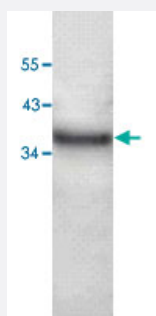


PDLIM3 polyclonal antibody

Catalog # PAB19747 Size 100 ug

Applications



Western Blot (Tissue lysate)

Western blot analysis of human fetal muscle tissue lysate with PDLIM3 polyclonal antibody (Cat # PAB19747) at 1:500 dilution.

Specification

Product Description	Rabbit polyclonal antibody raised against synthetic peptide of PDLIM3.
Immunogen	A synthetic peptide corresponding to 14 amino acids at C-terminus of human PDLIM3.
Host	Rabbit
Reactivity	Human, Mouse, Rat
Form	Liquid
Recommend Usage	ELISA (1:10000-1:40000) Western Blot (1:200-500) The optimal working dilution should be determined by the end user.
Storage Buffer	In serum (0.02% sodium azide)
Storage Instruction	Store at 4°C for three months. For long term storage store at -20°C. Aliquot to avoid repeated freezing and thawing.
Note	This product contains sodium azide: a POISONOUS AND HAZARDOUS SUBSTANCE which should be handled by trained staff only.

Applications

- Western Blot (Tissue lysate)

Western blot analysis of human fetal muscle tissue lysate with PDLIM3 polyclonal antibody (Cat # PAB19747) at 1:500 dilution.

- Enzyme-linked Immunoabsorbent Assay

Gene Info — PDLIM3

Entrez GeneID [27295](#)

Protein Accession# [NP_055291](#)

Gene Name PDLIM3

Gene Alias ALP, DKFZp686L0362

Gene Description PDZ and LIM domain 3

Omim ID [605889](#)

Gene Ontology [Hyperlink](#)

Gene Summary The protein encoded by this gene contains a PDZ domain and a LIM domain, indicating that it may be involved in cytoskeletal assembly. In support of this, the encoded protein has been shown to bind the spectrin-like repeats of alpha-actinin-2 and to colocalize with alpha-actinin-2 at the Z line of skeletal muscle. This gene is found near a region of chromosome 4 that has been implicated in facioscapulohumeral muscular dystrophy, but this gene does not appear to be involved in the disease. Two transcript variants encoding different isoforms have been found for this gene. [provided by RefSeq]

Other Designations PDZ and LIM domain protein 3|alpha-actinin-2-associated LIM protein|enigma homolog

Disease

- [Cardiomyopathy](#)