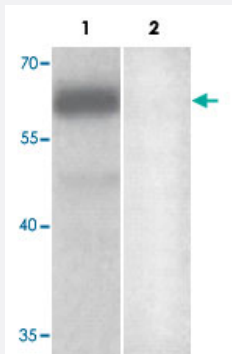


# MAGI2 polyclonal antibody

Catalog # PAB19744

Size 100 ug

## Applications



### Western Blot (Tissue lysate)

Western blot analysis of human fetal brain tissue lysate with MAGI2 polyclonal antibody (Cat # PAB19744) at 1:500 dilution.

Lane 1, non-peptide blocked

Lane 2, peptide blocked

## Specification

|                     |   |
|---------------------|---|
| Product Description | Rabbit polyclonal antibody raised against synthetic peptide of MAGI2.   |
| Immunogen           | A synthetic peptide corresponding to 13 amino acids at C-terminus of human MAGI2.   |
| Host                | Rabbit  |
| Reactivity          | Human, Mouse, Rat   |
| Form                | Liquid  |
| Purification        | Protein A purification  |
| Recommend Usage     | ELISA (1:1000-1:10000)<br>Western Blot (1:200-1000)<br>The optimal working dilution should be determined by the end user. |
| Storage Buffer      | In serum (0.02% sodium azide)   |
| Storage Instruction | Store at 4°C for three months. For long term storage store at -20°C.<br>Aliquot to avoid repeated freezing and thawing.   |

## Note

This product contains sodium azide: a POISONOUS AND HAZARDOUS SUBSTANCE which should be handled by trained staff only.

## Applications

- Western Blot (Tissue lysate)

Western blot analysis of human fetal brain tissue lysate with MAGI2 polyclonal antibody (Cat # PAB19744) at 1:500 dilution.  
Lane 1, non-peptide blocked  
Lane 2, peptide blocked

- Enzyme-linked Immunoabsorbent Assay

## Gene Info — MAGI2

Entrez GeneID [9863](#)

Protein Accession# [NP\\_036433](#)

Gene Name MAGI2

Gene Alias ACVRIP1, AIP1, ARIP1, MAGI-2, SSCAM

Gene Description membrane associated guanylate kinase, WW and PDZ domain containing 2

Omim ID [606382](#)

Gene Ontology [Hyperlink](#)

**Gene Summary** The protein encoded by this gene interacts with atrophin-1. Atrophin-1 contains a polyglutamine repeat, expansion of which is responsible for dentatorubral and pallidolusian atrophy. This encoded protein is characterized by two WW domains, a guanylate kinase-like domain, and multiple PDZ domains. It has structural similarity to the membrane-associated guanylate kinase homologue (MAGUK) family. [provided by RefSeq]

**Other Designations** activin receptor interacting protein 1|atrophin 1 interacting protein 1|atrophin-1 interacting protein A|membrane associated guanylate kinase 2

## Pathway

- [Tight junction](#)

## Disease

- [Cardiovascular Diseases](#)
- [Celiac Disease](#)
- [Colitis](#)
- [Crohn Disease](#)
- [Diabetes Mellitus](#)
- [Down Syndrome](#)
- [Edema](#)
- [Genetic Predisposition to Disease](#)
- [Mental Disorders](#)
- [Tobacco Use Disorder](#)