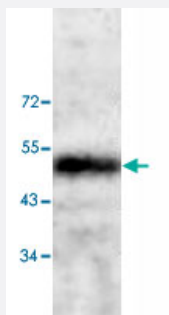


# CNN3 polyclonal antibody

Catalog # PAB19736      Size 100 ug

## Applications



### Western Blot (Tissue lysate)

Western blot analysis of human fetal heart tissue lysate with CNN3 polyclonal antibody (Cat # PAB19736) at 1:200 dilution.

## Specification

<b>Product Description</b>	Rabbit polyclonal antibody raised against synthetic peptide of CNN3.
<b>Immunogen</b>	A synthetic peptide corresponding to 16 amino acids at C-terminus of human CNN3.
<b>Host</b>	Rabbit
<b>Reactivity</b>	Human
<b>Form</b>	Liquid
<b>Purification</b>	Peptide affinity purification
<b>Recommend Usage</b>	ELISA (1:1000-1:10000) Western Blot (1:200-500) The optimal working dilution should be determined by the end user.
<b>Storage Buffer</b>	In serum (0.02% sodium azide)
<b>Storage Instruction</b>	Store at 4°C for three months. For long term storage store at -20°C. Aliquot to avoid repeated freezing and thawing.
<b>Note</b>	This product contains sodium azide: a POISONOUS AND HAZARDOUS SUBSTANCE which should be handled by trained staff only.

## Applications

- Western Blot (Tissue lysate)

Western blot analysis of human fetal heart tissue lysate with CNN3 polyclonal antibody (Cat # PAB19736) at 1:200 dilution.

- Enzyme-linked Immunoabsorbent Assay

## Gene Info — CNN3

**Entrez GeneID** [1266](#)

**Protein Accession#** [Q15417](#)

**Gene Name** CNN3

**Gene Alias** -

**Gene Description** calponin 3, acidic

**Omim ID** [602374](#)

**Gene Ontology** [Hyperlink](#)

**Gene Summary** This gene encodes a protein with a markedly acidic C terminus; the basic N-terminus is highly homologous to the N-terminus of a related gene, CNN1. Members of the CNN gene family all contain similar tandemly repeated motifs. This encoded protein is associated with the cytoskeleton but is not involved in contraction. [provided by RefSeq]

**Other Designations** calponin 3|calponin, acidic|dJ639P13.2.2 (acidic calponin 3)

## Disease

- [Tobacco Use Disorder](#)