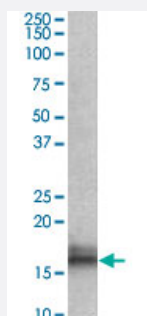


Npc2 polyclonal antibody

Catalog # PAB19731 Size 100 ug

Applications



Western Blot (Tissue lysate)

Npc2 polyclonal antibody (Cat # PAB19731) (0.1 ug/mL) staining of mouse kidney lysate (35 ug protein in RIPA buffer). Primary incubation was 1 hour. Detected by chemiluminescence.

Specification

Product Description	Goat polyclonal antibody raised against synthetic peptide of Npc2.
Immunogen	A synthetic peptide corresponding to amino acids 21-33 at internal region of mouse Npc2.
Sequence	QAEPLHFKDCGSK
Host	Goat
Theoretical MW (kDa)	16.4
Reactivity	Mouse
Form	Liquid
Purification	Antigen affinity purification
Recommend Usage	ELISA (1:32000) Western Blot (0.1-0.3 ug/mL) The optimal working dilution should be determined by the end user.
Storage Buffer	In Tris saline, pH 7.3 (0.5% BSA, 0.02% sodium azide)

Storage Instruction

Store at -20°C.
Aliquot to avoid repeated freezing and thawing.

Note

This product contains sodium azide: a POISONOUS AND HAZARDOUS SUBSTANCE which should be handled by trained staff only.

Applications

- Western Blot (Tissue lysate)

Npc2 polyclonal antibody (Cat # PAB19731) (0.1 ug/mL) staining of mouse kidney lysate (35 ug protein in RIPA buffer). Primary incubation was 1 hour. Detected by chemiluminescence.

- Enzyme-linked Immunoabsorbent Assay

Gene Info — Npc2

Entrez GeneID[67963](#)**Protein Accession#**[NP_075898.1](#)**Gene Name**

Npc2

Gene Alias

2700012J19Rik, AA408070, AU045843, HE1

Gene Description

Niemann Pick type C2

Gene Ontology[Hyperlink](#)**Other Designations**

epididymal secretory protein E1