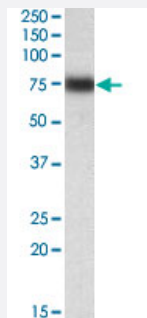


IRF2BP1 polyclonal antibody

Catalog # PAB19721 Size 100 ug

Applications



Western Blot (Cell lysate)

IRF2BP1 polyclonal antibody (Cat # PAB19721) (0.1 ug/mL) staining of HepG2 lysate (35 ug protein in RIPA buffer). Primary incubation was 1 hour. Detected by chemiluminescence.

Specification

Product Description	Goat polyclonal antibody raised against synthetic peptide of IRF2BP1.
Immunogen	A synthetic peptide corresponding to amino acids 109-122 at internal region of human IRF2BP1.
Sequence	C-QDRYDRATSSGRLP
Host	Goat
Theoretical MW (kDa)	61.7
Reactivity	Human
Form	Liquid
Purification	Antigen affinity purification
Recommend Usage	ELISA (1:32000) Western Blot (0.1-0.3 ug/mL) The optimal working dilution should be determined by the end user.
Storage Buffer	In Tris saline, pH 7.3 (0.5% BSA, 0.02% sodium azide)

Storage Instruction

Store at -20°C.
Aliquot to avoid repeated freezing and thawing.

Note

This product contains sodium azide: a POISONOUS AND HAZARDOUS SUBSTANCE which should be handled by trained staff only.

Applications

- Western Blot (Cell lysate)

IRF2BP1 polyclonal antibody (Cat # PAB19721) (0.1 ug/mL) staining of HepG2 lysate (35 ug protein in RIPA buffer). Primary incubation was 1 hour. Detected by chemiluminescence.

- Enzyme-linked Immunoabsorbent Assay

Gene Info — IRF2BP1

Entrez GeneID[26145](#)**Protein Accession#**[NP_056464.1](#)**Gene Name**

IRF2BP1

Gene Alias

DKFZp434M154

Gene Description

interferon regulatory factor 2 binding protein 1

Gene Ontology[Hyperlink](#)**Other Designations**

-