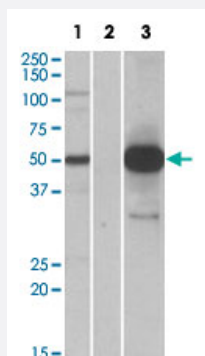


# COPS3 polyclonal antibody

Catalog # PAB19717      Size 100 ug

## Applications



### Western Blot (Transfected lysate)

HEK293 lysate (10 ug protein in RIPA buffer) overexpressing human COPS3 with DYKDDDDK tag probed with COPS3 polyclonal antibody (Cat # PAB19717) (1.0 ug/mL) in lane 1 and probed with anti-DYKDDDDK Tag (1/5000) in lane 3. Mock-transfected HEK293 probed with COPS3 polyclonal antibody (Cat # PAB19717) (1 mg/mL) in lane 2. Primary incubations were for 1 hour. Detected by chemiluminescence.

## Specification

<b>Product Description</b>	Goat polyclonal antibody raised against synthetic peptide of COPS3.
<b>Immunogen</b>	A synthetic peptide corresponding to internal region of human COPS3.
<b>Sequence</b>	C-SLYKKNIQRLT
<b>Host</b>	Goat
<b>Theoretical MW (kDa)</b>	50
<b>Reactivity</b>	Human
<b>Form</b>	Liquid
<b>Purification</b>	Antigen affinity purification
<b>Recommend Usage</b>	ELISA (1:4000) Western Blot (1-2 ug/mL) The optimal working dilution should be determined by the end user.
<b>Storage Buffer</b>	In Tris saline, pH 7.3 (0.5% BSA, 0.02% sodium azide)

**Storage Instruction**

Store at -20°C.  
Aliquot to avoid repeated freezing and thawing.

**Note**

This product contains sodium azide: a POISONOUS AND HAZARDOUS SUBSTANCE which should be handled by trained staff only.

## Applications

- Western Blot (Transfected lysate)

HEK293 lysate (10 ug protein in RIPA buffer) overexpressing human COPS3 with DYKDDDDK tag probed with COPS3 polyclonal antibody (Cat # PAB19717) (1.0 ug/mL) in lane 1 and probed with anti-DYKDDDDK Tag (1/5000) in lane 3. Mock-transfected HEK293 probed with COPS3 polyclonal antibody (Cat # PAB19717) (1 mg/mL) in lane 2. Primary incubations were for 1 hour. Detected by chemiluminescence.

- Enzyme-linked Immunoabsorbent Assay

## Gene Info — COPS3

**Entrez GeneID**[8533](#)**Protein Accession#**[NP\\_003644.2](#)**Gene Name**

COPS3

**Gene Alias**

CSN3, SGN3

**Gene Description**

COP9 constitutive photomorphogenic homolog subunit 3 (Arabidopsis)

**Omim ID**[604665](#)**Gene Ontology**[Hyperlink](#)**Gene Summary**

The protein encoded by this gene possesses kinase activity that phosphorylates regulators involved in signal transduction. It phosphorylates I kappa-Balpha, p105, and c-Jun. It acts as a docking site for complex-mediated phosphorylation. The gene is located within the Smith-Magenis syndrome region on chromosome 17. [provided by RefSeq]

**Other Designations**

COP9 complex subunit 3|COP9 constitutive photomorphogenic homolog subunit 3|JAB1-containing signalosome subunit 3