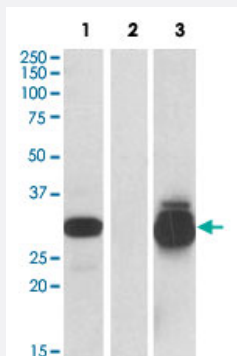


# PPPDE1 polyclonal antibody

Catalog # PAB19710      Size 100 ug

## Applications



### Western Blot (Transfected lysate)

HEK293 lysate (10 ug protein in RIPA buffer) overexpressing human PPPDE1 with C-terminal MYC tag probed with PPPDE1 polyclonal antibody (Cat # PAB19710) (0.5 ug/mL) in lane 1 and probed with anti-MYC Tag (1/5000) in lane 3. Mock-transfected HEK293 probed with PPPDE1 polyclonal antibody (Cat # PAB19710) (1 mg/mL) in lane 2. Primary incubations were for 1 hour. Detected by chemiluminescence.

## Specification

<b>Product Description</b>	Goat polyclonal antibody raised against synthetic peptide of PPPDE1.
<b>Immunogen</b>	A synthetic peptide corresponding to internal region of human PPPDE1.
<b>Sequence</b>	C-ELGKEYKGNAYH
<b>Host</b>	Goat
<b>Theoretical MW (kDa)</b>	30
<b>Reactivity</b>	Human
<b>Form</b>	Liquid
<b>Purification</b>	Antigen affinity purification
<b>Recommend Usage</b>	ELISA (1:32000) Western Blot (0.5-1 ug/mL) The optimal working dilution should be determined by the end user.
<b>Storage Buffer</b>	In Tris saline, pH 7.3 (0.5% BSA, 0.02% sodium azide)

**Storage Instruction**

Store at -20°C.  
Aliquot to avoid repeated freezing and thawing.

**Note**

This product contains sodium azide: a POISONOUS AND HAZARDOUS SUBSTANCE which should be handled by trained staff only.

## Applications

- Western Blot (Transfected lysate)

HEK293 lysate (10 ug protein in RIPA buffer) overexpressing human PPPDE1 with C-terminal MYC tag probed with PPPDE1 polyclonal antibody (Cat # PAB19710) (0.5 ug/mL) in lane 1 and probed with anti-MYC Tag (1/5000) in lane 3. Mock-transfected HEK293 probed with PPPDE1 polyclonal antibody (Cat # PAB19710) (1 mg/mL) in lane 2. Primary incubations were for 1 hour. Detected by chemiluminescence.

- Enzyme-linked Immunoabsorbent Assay

## Gene Info — PPPDE1

**Entrez GeneID**[51029](#)**Protein Accession#**[NP\\_057160.2](#)**Gene Name**

PPPDE1

**Gene Alias**

PNAS-4, CGI-146, FAM152A, C1orf121

**Gene Description**

PPPDE peptidase domain containing 1

**Gene Ontology**[Hyperlink](#)**Other Designations**

OTTHUMP00000038197|hypothetical protein LOC51029