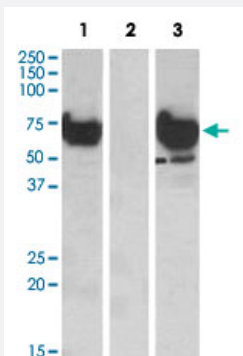


EPM2AIP1 polyclonal antibody

Catalog # PAB19709 Size 100 ug

Applications



Western Blot (Transfected lysate)

HEK293 lysate (10 ug protein in RIPA buffer) overexpressing human EPM2AIP1 with DYKDDDDK tag probed with EPM2AIP1 polyclonal antibody (Cat # PAB19709) (1 ug/mL) in lane 1 and probed with anti-DYKDDDDK Tag (1/1000) in lane 3. Mock-transfected HEK293 probed with EPM2AIP1 polyclonal antibody (Cat # PAB19709) (1 mg/mL) in lane 2. Primary incubations were for 1 hour. Detected by chemiluminescence.

Specification

Product Description	Goat polyclonal antibody raised against synthetic peptide of EPM2AIP1.
Immunogen	A synthetic peptide corresponding to C-terminus of human EPM2AIP1.
Sequence	C-TRNQHTLSQPLTDEH
Host	Goat
Theoretical MW (kDa)	70
Reactivity	Human
Form	Liquid
Purification	Antigen affinity purification
Recommend Usage	ELISA (1:8000) Western Blot (1-2 ug/mL) The optimal working dilution should be determined by the end user.
Storage Buffer	In Tris saline, pH 7.3 (0.5% BSA, 0.02% sodium azide)

Storage Instruction

Store at -20°C.
Aliquot to avoid repeated freezing and thawing.

Note

This product contains sodium azide: a POISONOUS AND HAZARDOUS SUBSTANCE which should be handled by trained staff only.

Applications

- Western Blot (Transfected lysate)

HEK293 lysate (10 ug protein in RIPA buffer) overexpressing human EPM2AIP1 with DYKDDDDK tag probed with EPM2AIP1 polyclonal antibody (Cat # PAB19709) (1 ug/mL) in lane 1 and probed with anti-DYKDDDDK Tag (1/1000) in lane 3. Mock-transfected HEK293 probed with EPM2AIP1 polyclonal antibody (Cat # PAB19709) (1 mg/mL) in lane 2. Primary incubations were for 1 hour. Detected by chemiluminescence.

- Enzyme-linked Immunoabsorbent Assay

Gene Info — EPM2AIP1

Entrez GeneID[9852](#)**Protein Accession#**[NP_055620.1](#)**Gene Name**

EPM2AIP1

Gene Alias

FLJ11207, KIAA0766

Gene Description

EPM2A (laforin) interacting protein 1

Omim ID[607911](#)**Gene Ontology**[Hyperlink](#)**Gene Summary**

The EPM2A gene, which encodes laforin, is mutated in an autosomal recessive form of adolescent progressive myoclonus epilepsy. The protein encoded by this gene binds to laforin, but its function is not known. This gene is intronless. [provided by RefSeq]

Other Designations

EPM2A interacting protein 1

Disease

- [Breast cancer](#)
- [Breast Neoplasms](#)

- [Genetic Predisposition to Disease](#)
- [Ovarian cancer](#)