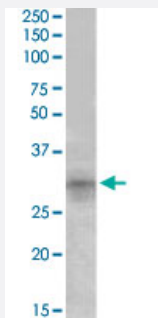


# IGFBP7 polyclonal antibody

Catalog # PAB19707      Size 100 ug

## Applications



### Western Blot (Tissue lysate)

IGFBP7 polyclonal antibody (Cat # PAB19707) (1 ug/mL) staining of mouse kidney lysate (35 ug protein in RIPA buffer). Primary incubation was 1 hour. Detected by chemiluminescence.

## Specification

<b>Product Description</b>	Goat polyclonal antibody raised against synthetic peptide of IGFBP7.
<b>Immunogen</b>	A synthetic peptide corresponding to amino acids 145-159 at internal region of human IGFBP7.
<b>Sequence</b>	EKAITQVSKGTCEQG
<b>Host</b>	Goat
<b>Theoretical MW (kDa)</b>	29.1
<b>Reactivity</b>	Mouse
<b>Form</b>	Liquid
<b>Purification</b>	Antigen affinity purification
<b>Recommend Usage</b>	ELISA (1:8000) Western Blot (1-3 ug/mL) The optimal working dilution should be determined by the end user.
<b>Storage Buffer</b>	In Tris saline, pH 7.3 (0.5% BSA, 0.02% sodium azide)

**Storage Instruction**

Store at -20°C.  
Aliquot to avoid repeated freezing and thawing.

**Note**

This product contains sodium azide: a POISONOUS AND HAZARDOUS SUBSTANCE which should be handled by trained staff only.

## Applications

- Western Blot (Tissue lysate)

IGFBP7 polyclonal antibody (Cat # PAB19707) (1 ug/mL) staining of mouse kidney lysate (35 ug protein in RIPA buffer). Primary incubation was 1 hour. Detected by chemiluminescence.

- Enzyme-linked Immunoabsorbent Assay

## Gene Info — IGFBP7

**Entrez GeneID**[3490](#)**Protein Accession#**[NP\\_001544.1](#)**Gene Name**

IGFBP7

**Gene Alias**

FSTL2, IGFBP-7, IGFBP-7v, IGFBPRP1, MAC25, PSF

**Gene Description**

insulin-like growth factor binding protein 7

**Omim ID**[602867](#)**Gene Ontology**[Hyperlink](#)**Other Designations**

-

## Disease

- [Carcinoma](#)
- [Genetic Predisposition to Disease](#)
- [Head and Neck Neoplasms](#)
- [Osteoarthritis](#)