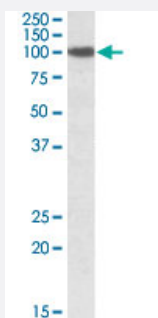


SEC23A polyclonal antibody

Catalog # PAB19704 Size 100 ug

Applications



Western Blot (Cell lysate)

SEC23A polyclonal antibody (Cat # PAB19704) (2 ug/mL) staining of NIH/3T3 lysate (35 ug protein in RIPA buffer). Primary incubation was 1 hour. Detected by chemiluminescence.

Specification

Product Description	Goat polyclonal antibody raised against synthetic peptide of SEC23A.
Immunogen	A synthetic peptide corresponding to internal region of human SEC23A.
Sequence	C-ANRAATTGHVID
Host	Goat
Theoretical MW (kDa)	86.2
Reactivity	Mouse
Form	Liquid
Purification	Antigen affinity purification
Recommend Usage	ELISA (1:32000) Western Blot (1-3 ug/mL) The optimal working dilution should be determined by the end user.
Storage Buffer	In Tris saline, pH 7.3 (0.5% BSA, 0.02% sodium azide)

Storage Instruction

Store at -20°C.
Aliquot to avoid repeated freezing and thawing.

Note

This product contains sodium azide: a POISONOUS AND HAZARDOUS SUBSTANCE which should be handled by trained staff only.

Applications

- Western Blot (Cell lysate)

SEC23A polyclonal antibody (Cat # PAB19704) (2 ug/mL) staining of NIH/3T3 lysate (35 ug protein in RIPA buffer). Primary incubation was 1 hour. Detected by chemiluminescence.

- Enzyme-linked Immunoabsorbent Assay

Gene Info — SEC23A

Entrez GeneID[10484](#)**Protein Accession#**[NP_006355.2](#)**Gene Name**

SEC23A

Gene Alias

CLSD, MGC26267

Gene Description

Sec23 homolog A (S. cerevisiae)

Omim ID[607812 610511](#)**Gene Ontology**[Hyperlink](#)**Gene Summary**

The protein encoded by this gene is a member of the SEC23 subfamily of the SEC23/SEC24 family. It is part of a protein complex and found in the ribosome-free transitional face of the endoplasmic reticulum (ER) and associated vesicles. This protein has similarity to yeast Sec23p component of COPII. COPII is the coat protein complex responsible for vesicle budding from the ER. The encoded protein is suggested to play a role in the ER-Golgi protein trafficking. [provided by RefSeq]

Other Designations

SEC23-related protein A|protein transport protein SEC23A|transport protein Sec23

Disease

- [Tobacco Use Disorder](#)