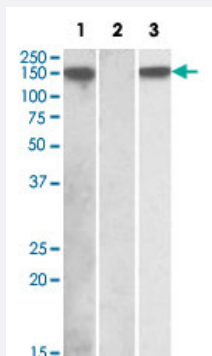


NLRP2 polyclonal antibody

Catalog # PAB19696 Size 100 ug

Applications



Western Blot (Transfected lysate)

HEK293 lysate (10 ug protein in RIPA buffer) overexpressing human NLRP2 with DYKDDDDK tag probed with NLRP2 polyclonal antibody (Cat # PAB19696) (1 ug/mL) in lane 1 and probed with anti- DYKDDDDK Tag (1/1000) in lane 3. Mock-transfected HEK293 probed with NLRP2 polyclonal antibody (Cat # PAB19696) (1 mg/mL) in lane 2. Primary incubations were for 1 hour. Detected by chemiluminescence.

Specification

Product Description Goat polyclonal antibody raised against synthetic peptide of NLRP2.

Immunogen A synthetic peptide corresponding to C-terminus of human NLRP2.

Sequence C-TEKHHPWAERPSSHD

Host Goat

Theoretical MW (kDa) 150

Reactivity Human

Form Liquid

Purification Antigen affinity purification

Recommend Usage Western Blot (1-2 ug/mL)
The optimal working dilution should be determined by the end user.

Storage Buffer In Tris saline, pH 7.3 (0.5% BSA, 0.02% sodium azide)

Storage Instruction

Store at -20°C.
Aliquot to avoid repeated freezing and thawing.

Note

This product contains sodium azide: a POISONOUS AND HAZARDOUS SUBSTANCE which should be handled by trained staff only.

Applications

- Western Blot (Transfected lysate)

HEK293 lysate (10 ug protein in RIPA buffer) overexpressing human NLRP2 with DYKDDDDK tag probed with NLRP2 polyclonal antibody (Cat # PAB19696) (1 ug/mL) in lane 1 and probed with anti- DYKDDDDK Tag (1/1000) in lane 3. Mock-transfected HEK293 probed with NLRP2 polyclonal antibody (Cat # PAB19696) (1 mg/mL) in lane 2. Primary incubations were for 1 hour. Detected by chemiluminescence.

- Enzyme-linked Immunoabsorbent Assay

Gene Info — NLRP2

Entrez GeneID[55655](#)**Protein Accession#**[NP_060322.1](#)**Gene Name**

NLRP2

Gene Alias

CLR19.9, FLJ20510, NALP2, NBS1, PAN1, PYPAF2

Gene Description

NLR family, pyrin domain containing 2

Omim ID[609364](#)**Gene Ontology**[Hyperlink](#)**Gene Summary**

NALP proteins, such as NALP2, are characterized by an N-terminal pyrin (MIM 608107) domain (PYD) and are involved in the activation of caspase-1 (CASP1; MIM 147678) by Toll-like receptors (see TLR4; MIM 603030). They may also be involved in protein complexes that activate proinflammatory caspases (Tschopp et al., 2003 [PubMed 12563287]).[supplied by OMIM]

Other Designations

NACHT, LRR and PYD containing protein 2|NACHT, leucine rich repeat and PYD containing 2|PYRIN-Containing APAF1-like|nucleotide-binding oligomerization domain, leucine rich repeat and pyrin domain containing 2

Disease

- [Crohn Disease](#)
- [Genetic Predisposition to Disease](#)
- [Hematologic Neoplasms](#)
- [Recurrence](#)