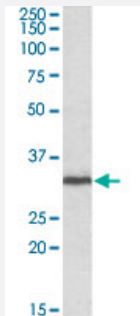


GNB2L1 polyclonal antibody

Catalog # PAB19693 Size 100 ug

Applications



Western Blot (Tissue lysate)

GNB2L1 polyclonal antibody (Cat # PAB19693) (0.1 ug/mL) staining of human lymph nodes lysate (35 ug protein in RIPA buffer). Primary incubation was 1 hour. Detected by chemiluminescence.

Specification

Product Description	Goat polyclonal antibody raised against synthetic peptide of GNB2L1.
Immunogen	A synthetic peptide corresponding to internal region of human GNB2L1.
Sequence	NTLGVCKYTVQDESH
Host	Goat
Theoretical MW (kDa)	35.1
Reactivity	Human, Mouse, Rat
Form	Liquid
Purification	Antigen affinity purification
Recommend Usage	Western Blot (0.1-0.3 ug/mL) The optimal working dilution should be determined by the end user.
Storage Buffer	In Tris saline, pH 7.3 (0.5% BSA, 0.02% sodium azide)
Storage Instruction	Store at -20°C. Aliquot to avoid repeated freezing and thawing.

Note

This product contains sodium azide: a POISONOUS AND HAZARDOUS SUBSTANCE which should be handled by trained staff only.

Applications

- Western Blot (Tissue lysate)

GNB2L1 polyclonal antibody (Cat # PAB19693) (0.1 ug/mL) staining of human lymph nodes lysate (35 ug protein in RIPA buffer). Primary incubation was 1 hour. Detected by chemiluminescence.

- Enzyme-linked Immunoabsorbent Assay

Gene Info — GNB2L1

Entrez GeneID	10399
Protein Accession#	NP_006089.1
Gene Name	GNB2L1
Gene Alias	Gnb2-rs1, H12.3, HLC-7, PIG21, RACK1
Gene Description	guanine nucleotide binding protein (G protein), beta polypeptide 2-like 1
Omim ID	176981
Gene Ontology	Hyperlink
Gene Summary	O
Other Designations	lung cancer oncogene 7 proliferation-inducing gene 21 protein homologous to chicken B complex protein, guanine nucleotide binding

Disease

- [Genetic Predisposition to Disease](#)
- [Lung Neoplasms](#)