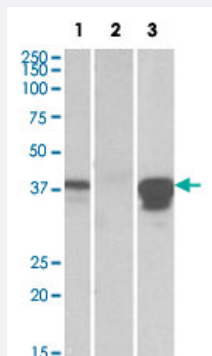


POU2AF1 polyclonal antibody

Catalog # PAB19691 Size 100 ug

Applications



Western Blot (Transfected lysate)

HEK293 lysate (10 ug protein in RIPA buffer) overexpressing human POU2AF1 with DYKDDDDK tag probed with POU2AF1 polyclonal antibody (Cat # PAB19691) (0.5 ug/mL) in lane 1 and probed with anti-DYKDDDDK Tag (1/3000) in lane 3. Mock-transfected HEK293 probed with POU2AF1 polyclonal antibody (Cat # PAB19691) (1 mg/mL) in lane 2. Primary incubations were for 1 hour. Detected by chemiluminescence.

Specification

Product Description	Goat polyclonal antibody raised against synthetic peptide of POU2AF1.
Immunogen	A synthetic peptide corresponding to internal region of human POU2AF1.
Sequence	YTEYVPHEAVSCP
Host	Goat
Theoretical MW (kDa)	38
Reactivity	Human
Form	Liquid
Purification	Antigen affinity purification
Recommend Usage	Western Blot (0.5-1 ug/mL) The optimal working dilution should be determined by the end user.
Storage Buffer	In Tris saline, pH 7.3 (0.5% BSA, 0.02% sodium azide)

Storage Instruction

Store at -20°C.
Aliquot to avoid repeated freezing and thawing.

Note

This product contains sodium azide: a POISONOUS AND HAZARDOUS SUBSTANCE which should be handled by trained staff only.

Applications

- Western Blot (Transfected lysate)

HEK293 lysate (10 ug protein in RIPA buffer) overexpressing human POU2AF1 with DYKDDDDK tag probed with POU2AF1 polyclonal antibody (Cat # PAB19691) (0.5 ug/mL) in lane 1 and probed with anti- DYKDDDDK Tag (1/3000) in lane 3. Mock-transfected HEK293 probed with POU2AF1 polyclonal antibody (Cat # PAB19691) (1 mg/mL) in lane 2. Primary incubations were for 1 hour. Detected by chemiluminescence.

- Enzyme-linked Immunoabsorbent Assay

Gene Info — POU2AF1

Entrez GeneID[5450](#)**Protein Accession#**[NP_006226.2](#)**Gene Name**

POU2AF1

Gene Alias

BOB1, OBF-1, OBF1, OCAB

Gene Description

POU class 2 associating factor 1

Omim ID[601206](#)**Gene Ontology**[Hyperlink](#)**Gene Summary**

class 2

Other Designations

POU domain, class 2, associating factor 1

Disease

- [Cardiovascular Diseases](#)
- [Colorectal Neoplasms](#)
- [Diabetes Mellitus](#)

- [Edema](#)
- [Genetic Predisposition to Disease](#)
- [Multiple Sclerosis](#)