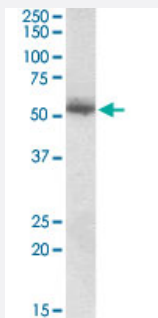


CPNE1 polyclonal antibody

Catalog # PAB19677 Size 100 ug

Applications



Western Blot (Tissue lysate)

CPNE1 polyclonal antibody (Cat # PAB19677) (0.1 ug/mL) staining of human skin lysate (35 ug protein in RIPA buffer). Primary incubation was 1 hour. Detected by chemiluminescence.

Specification

Product Description	Goat polyclonal antibody raised against synthetic peptide of CPNE1.
Immunogen	A synthetic peptide corresponding to C-terminus of human CPNE1.
Sequence	C-APLKPLPPSAKDPA
Host	Goat
Theoretical MW (kDa)	59.1
Reactivity	Human
Specificity	This antibody is expected to recognize isoform a and b (NP_003906.2; NP_690902.1). Reported variants represent identical protein: NP_690905.1, NP_690902.1, NP_690903.1, NP_690906.1, NP_690904.1, NP_690907.1, NP_690908.1.
Form	Liquid
Purification	Antigen affinity purification
Recommend Usage	ELISA (1:16000) Western Blot (0.1-0.3 ug/mL) The optimal working dilution should be determined by the end user.

Storage Buffer	In Tris saline, pH 7.3 (0.5% BSA, 0.02% sodium azide)
Storage Instruction	Store at -20°C. Aliquot to avoid repeated freezing and thawing.
Note	This product contains sodium azide: a POISONOUS AND HAZARDOUS SUBSTANCE which should be handled by trained staff only.

Applications

- Western Blot (Tissue lysate)

CPNE1 polyclonal antibody (Cat # PAB19677) (0.1 ug/mL) staining of human skin lysate (35 ug protein in RIPA buffer). Primary incubation was 1 hour. Detected by chemiluminescence.

- Enzyme-linked Immunoabsorbent Assay

Gene Info — CPNE1

Entrez GeneID	8904
Protein Accession#	NP_690902.1;NP_003906.2
Gene Name	CPNE1
Gene Alias	COPN1, CPN1, MGC1142
Gene Description	copine I
Omim ID	604205
Gene Ontology	Hyperlink

Gene Summary	Calcium-dependent membrane-binding proteins may regulate molecular events at the interface of the cell membrane and cytoplasm. This gene encodes a calcium-dependent protein that also contains two N-terminal type II C2 domains and an integrin A domain-like sequence in the C-terminus. However, the encoded protein does not contain a predicted signal sequence or transmembrane domains. This protein has a broad tissue distribution and it may function in membrane trafficking. This gene and the gene for RNA binding motif protein 12 overlap at map location 20q11.21. Alternate splicing results in multiple transcript variants encoding different proteins. [provided by RefSeq]
Other Designations	OTTHUMP00000030775 OTTHUMP00000030776 copine-1