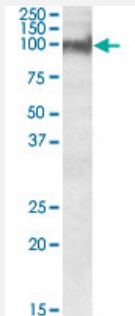


PKP2 polyclonal antibody

Catalog # PAB19653 Size 100 ug

Applications



Western Blot (Tissue lysate)

PKP2 polyclonal antibody (Cat # PAB19653) (0.3 ug/mL) staining of mouse heart lysate (35 ug protein in RIPA buffer). Primary incubation was 1 hour. Detected by chemiluminescence.

Specification

Product Description	Goat polyclonal antibody raised against synthetic peptide of PKP2.
Immunogen	A synthetic peptide corresponding to amino acids 125-139 at internal region of human PKP2.
Sequence	C-RGTAQYSSQKSVEER
Host	Goat
Theoretical MW (kDa)	88.1, 87.8
Reactivity	Mouse, Rat
Specificity	This antibody is expected to recognize both reported isoforms (NP_001005242.2; NP_004563.2).
Form	Liquid
Purification	Antigen affinity purification
Recommend Usage	ELISA (1:16000) Western Blot (0.3-1 ug/mL) The optimal working dilution should be determined by the end user.
Storage Buffer	In Tris saline, pH 7.3 (0.5% BSA, 0.02% sodium azide)

Storage Instruction

Store at -20°C.
Aliquot to avoid repeated freezing and thawing.

Note

This product contains sodium azide: a POISONOUS AND HAZARDOUS SUBSTANCE which should be handled by trained staff only.

Applications

- Western Blot (Tissue lysate)

PKP2 polyclonal antibody (Cat # PAB19653) (0.3 ug/mL) staining of mouse heart lysate (35 ug protein in RIPA buffer). Primary incubation was 1 hour. Detected by chemiluminescence.

- Enzyme-linked Immunoabsorbent Assay

Gene Info — PKP2

Entrez GeneID[5318](#)**Protein Accession#**[NP_001005242.2;NP_004563.2](#)**Gene Name**

PKP2

Gene Alias

ARVD9, MGC177501

Gene Description

plakophilin 2

Omim ID[602861 609040](#)**Gene Ontology**[Hyperlink](#)**Gene Summary**

This gene encodes a member of the arm-repeat (armadillo) and plakophilin gene families. Plakophilin proteins contain numerous armadillo repeats, localize to cell desmosomes and nuclei, and participate in linking cadherins to intermediate filaments in the cytoskeleton. This gene product may regulate the signaling activity of beta-catenin. Two alternately spliced transcripts encoding two protein isoforms have been identified. A processed pseudogene with high similarity to this locus has been mapped to chromosome 12p13. [provided by RefSeq]

Other Designations

-

Pathway

- [Arrhythmogenic right ventricular cardiomyopathy \(ARVC\)](#)

Disease

- [Arrhythmias](#)
- [Arrhythmogenic Right Ventricular Dysplasia](#)
- [Cardiomyopathies](#)
- [Genetic Predisposition to Disease](#)
- [Tachycardia](#)