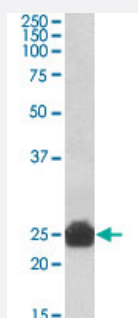


Yc2 polyclonal antibody

Catalog # PAB19635 Size 100 ug

Applications



Western Blot (Tissue lysate)

Yc2 polyclonal antibody (Cat # PAB19635) (0.3 ug/mL) staining of rat liver lysate (35 ug protein in RIPA buffer). Primary incubation was 1 hour. Detected by chemiluminescence.

Specification

Product Description	Goat polyclonal antibody raised against synthetic peptide of Yc2.
Immunogen	A synthetic peptide corresponding to internal region of rat Yc2.
Sequence	C-EMDPGVDFNFPLLK
Host	Goat
Theoretical MW (kDa)	25.3
Reactivity	Mouse, Rat
Specificity	Reported variants represent identical protein: NP_001009920.1, NP_001153211.1. Please note that this antibody is expected to cross-react to the homologous Mouse protein Gsta3.
Form	Liquid
Purification	Antigen affinity purification
Recommend Usage	ELISA (1:32000) Western Blot (0.3-1 ug/mL) The optimal working dilution should be determined by the end user.

Storage Buffer	In Tris saline, pH 7.3 (0.5% BSA, 0.02% sodium azide)
Storage Instruction	Store at -20°C. Aliquot to avoid repeated freezing and thawing.
Note	This product contains sodium azide: a POISONOUS AND HAZARDOUS SUBSTANCE which should be handled by trained staff only.

Applications

- Western Blot (Tissue lysate)

Yc2 polyclonal antibody (Cat # PAB19635) (0.3 ug/mL) staining of rat liver lysate (35 ug protein in RIPA buffer). Primary incubation was 1 hour. Detected by chemiluminescence.

- Enzyme-linked Immunoabsorbent Assay

Gene Info — Yc2

Entrez GeneID	494500
Protein Accession#	NP_001009920.1
Gene Name	Yc2
Gene Alias	-
Gene Description	glutathione S-transferase Yc2 subunit
Gene Ontology	Hyperlink
Other Designations	-