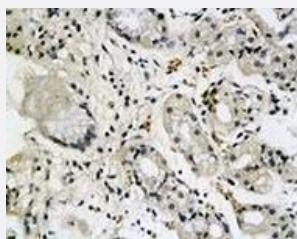


SCTR polyclonal antibody

Catalog # PAB19630 Size 100 ug

Applications



Immunohistochemistry

Immunohistochemical staining of human antrum tissue section with SCTR polyclonal antibody (Cat # PAB19630) at 1:200 dilution.

Specification

Product Description Rabbit polyclonal antibody raised against synthetic protein of SCTR.

Immunogen Synthetic protein corresponding to human SCTR.

Host Rabbit

Reactivity Human, Mouse, Pig, Rat

Form Lyophilized

Purification Protein G purification

Recommend Usage ELISA (1-2 ug/mL)
Western Blot (2-10 ug/mL)
Immunohistochemistry (2-10 ug/mL)
The optimal working dilution should be determined by the end user.

Storage Buffer Lyophilized from PBS.

Storage Instruction Store at -20°C on dry atmosphere.
After reconstitution with deionized water, store at 4°C for one month. For long term storage store at -20°C.
Aliquot to avoid repeated freezing and thawing.

Applications

- Western Blot

- Immunohistochemistry

Immunohistochemical staining of human antrum tissue section with SCTR polyclonal antibody (Cat # PAB19630) at 1:200 dilution.

- Enzyme-linked Immunoabsorbent Assay

Gene Info — SCTR

Entrez GeneID	6344
Protein Accession#	P47872
Gene Name	SCTR
Gene Alias	SR
Gene Description	secretin receptor
Omim ID	182098
Gene Ontology	Hyperlink
Gene Summary	The protein encoded by this gene is a G protein-coupled receptor and belongs to the glucagon-VI P-secretin receptor family. It binds secretin which is the most potent regulator of pancreatic bicarbonate, electrolyte and volume secretion. Secretin and its receptor are suggested to be involved in pancreatic cancer and autism. [provided by RefSeq]
Other Designations	pancreatic secretin receptor

Pathway

- [Neuroactive ligand-receptor interaction](#)