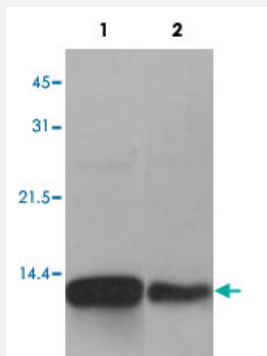


# S100A2 polyclonal antibody

Catalog # PAB19570

Size 50 ug

## Applications



### Western Blot (Cell lysate)

Western blot analysis of cell extracts with S100A2 polyclonal antibody (Cat # PAB19570).

Lane 1, A-431

Lane 2, SW480

## Specification

**Product Description** Rabbit polyclonal antibody raised against full length recombinant S100A2.

**Immunogen** Recombinant protein corresponding to full length human S100A2.

**Host** Rabbit

**Reactivity** Human

**Form** Liquid

**Purification** Immunoaffinity purification

**Concentration** 1 mg/mL

**Recommend Usage** Western Blot (1-2 ug/mL)  
The optimal working dilution should be determined by the end user.

**Storage Buffer** In 20 mM PBS, pH7.5, 300 mM NaCl (50% glycerol)

**Storage Instruction** Store at -20°C.  
Aliquot to avoid repeated freezing and thawing.

## Applications

- Western Blot (Cell lysate)

Western blot analysis of cell extracts with S100A2 polyclonal antibody (Cat # PAB19570).

Lane 1, A-431

Lane 2, SW480

## Gene Info — S100A2

Entrez GeneID [6273](#)

Gene Name S100A2

Gene Alias CAN19, MGC111539, S100L

Gene Description S100 calcium binding protein A2

Omim ID [176993](#)

Gene Ontology [Hyperlink](#)

**Gene Summary** The protein encoded by this gene is a member of the S100 family of proteins containing 2 EF-hand calcium-binding motifs. S100 proteins are localized in the cytoplasm and/or nucleus of a wide range of cells, and involved in the regulation of a number of cellular processes such as cell cycle progression and differentiation. S100 genes include at least 13 members which are located as a cluster on chromosome 1q21. This protein may have a tumor suppressor function. Chromosomal rearrangements and altered expression of this gene have been implicated in breast cancer. [provided by RefSeq]

**Other Designations** OTTHUMP00000032968|OTTHUMP00000032969|S100 calcium-binding protein A2

## Disease

- [Carcinoma](#)
- [Dermatitis](#)
- [Genetic Predisposition to Disease](#)
- [Lung Neoplasms](#)
- [Narcolepsy](#)
- [Psoriasis](#)