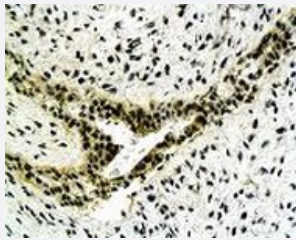


CYC1 polyclonal antibody

Catalog # PAB19560 Size 100 ug

Applications



Immunohistochemistry

Immunohistochemical staining of human gastric carcinoma tissue section with CYC1 polyclonal antibody (Cat # PAB19560) at 1:500 dilution. DAB chromogenic staining.

Specification

Product Description	Rabbit polyclonal antibody raised against synthetic protein of CYC1.
Immunogen	Synthetic protein corresponding to human CYC1.
Host	Rabbit
Reactivity	Human, Mouse, Rat
Form	Lyophilized
Purification	Protein G purification
Recommend Usage	ELISA (1-2 ug/mL) Western Blot (2-10 ug/mL) Immunohistochemistry (2-10 ug/mL) The optimal working dilution should be determined by the end user.
Storage Buffer	Lyophilized from PBS.
Storage Instruction	Store at -20°C on dry atmosphere. After reconstitution with deionized water, store at 4°C for one month. For long term storage store at -20°C. Aliquot to avoid repeated freezing and thawing.

Applications

- Western Blot

- Immunohistochemistry

Immunohistochemical staining of human gastric carcinoma tissue section with CYC1 polyclonal antibody (Cat # PAB19560) at 1:500 dilution. DAB chromogenic staining.

- Enzyme-linked Immunoabsorbent Assay

Gene Info — CYC1

Entrez GeneID	1537
---------------	----------------------

Protein Accession#	P08574
--------------------	------------------------

Gene Name	CYC1
-----------	------

Gene Alias	UQCR4
------------	-------

Gene Description	cytochrome c-1
------------------	----------------

Omim ID	123980
---------	------------------------

Gene Ontology	Hyperlink
---------------	---------------------------

Other Designations	-
--------------------	---

Pathway

- [Cardiac muscle contraction](#)
- [Metabolic pathways](#)
- [Oxidative phosphorylation](#)

Disease

- [Genetic Predisposition to Disease](#)

- [Ovarian Neoplasms](#)