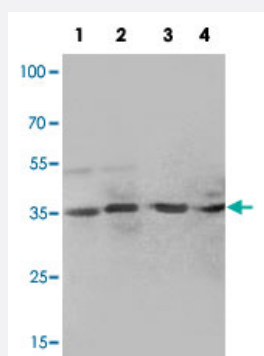


# MTA1 polyclonal antibody

Catalog # PAB19550      Size 100 ug

## Applications



### Western Blot (Tissue lysate)

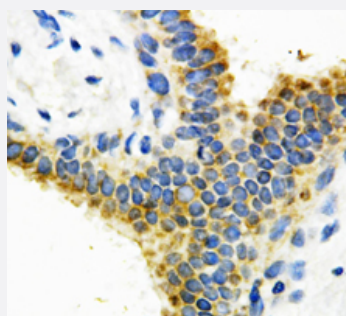
Western blot analysis of tissue lysates with MTA1 polyclonal antibody (Cat # PAB19550).

Lane 1 : rat liver

Lane 2 : rat thymus

Lane 3 : rat small intestine

Lane 4 : rat spleen



### Immunohistochemistry (Formalin/PFA-fixed paraffin-embedded sections)

Immunohistochemical staining of paraffin embedded human breast cancer tissue section with MTA1 polyclonal antibody (Cat # PAB19550).

## Specification

<b>Product Description</b>	Rabbit polyclonal antibody raised against synthetic peptide of MTA1.
<b>Immunogen</b>	A synthetic peptide corresponding to amino acids at C-terminus of human MTA1.
<b>Host</b>	Rabbit
<b>Reactivity</b>	Human, Mouse, Rat
<b>Specificity</b>	The synthetic peptide identical to the related mouse and rat sequence.
<b>Form</b>	Lyophilized

Purification	Immunoaffinity purification
Isotype	IgG
Recommend Usage	Western Blot (1 ug/mL) Immunohistochemistry (Formalin/PFA-fixed paraffin-embedded sections) (1 ug/mL) The optimal working dilution should be determined by the end user.
Storage Buffer	Lyophilized from 0.9 mg NaCl, 0.2 mg Na <sub>2</sub> HPO <sub>4</sub> (5 mg BSA, 0.05 mg sodium azide, 0.05 mg Thimerosal)
Storage Instruction	Store at -20°C on dry atmosphere. After reconstitution with 200 uL of deionized water and concentration will be 500 ug/mL, store at -20°C or lower. Aliquot to avoid repeated freezing and thawing.
Note	This product contains sodium azide and thimerosal: POISONOUS AND HAZARDOUS SUBSTANCE which should be handled by trained staff only.

## Applications

- Western Blot (Tissue lysate)

Western blot analysis of tissue lysates with MTA1 polyclonal antibody (Cat # PAB19550).

Lane 1 : rat liver

Lane 2 : rat thymus

Lane 3 : rat small intestine

Lane 4 : rat spleen

- Immunohistochemistry (Formalin/PFA-fixed paraffin-embedded sections)

Immunohistochemical staining of paraffin embedded human breast cancer tissue section with MTA1 polyclonal antibody (Cat # PAB19550).

## Gene Info — MTA1

Entrez GeneID	<a href="#">9112</a>
Gene Name	MTA1
Gene Alias	-
Gene Description	metastasis associated 1
Omim ID	<a href="#">603526</a>
Gene Ontology	<a href="#">Hyperlink</a>

**Gene Summary**

This gene encodes a protein that was identified in a screen for genes expressed in metastatic cells, specifically, mammary adenocarcinoma cell lines. Expression of this gene has been correlated with the metastatic potential of at least two types of carcinomas although it is also expressed in many normal tissues. The role it plays in metastasis is unclear. It was initially thought to be the 70kD component of a nucleosome remodeling deacetylase complex, NuRD, but it is more likely that this component is a different but very similar protein. These two proteins are so closely related, though, that they share the same types of domains. These domains include two DNA binding domains, a dimerization domain, and a domain commonly found in proteins that methylate DNA. The profile and activity of this gene product suggest that it is involved in regulating transcription and that this may be accomplished by chromatin remodeling. [provided by RefSeq]

**Other Designations**

metastasis associated gene 1 protein|metastasis associated protein

**Disease**

- [Breast cancer](#)
- [Breast Neoplasms](#)
- [Genetic Predisposition to Disease](#)
- [Neoplasm Metastasis](#)
- [Neoplasms](#)
- [Obesity](#)