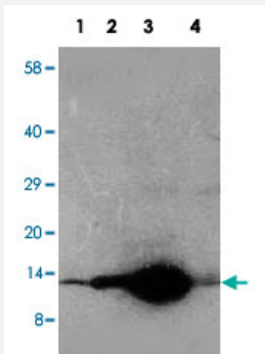


# DDT polyclonal antibody

Catalog # PAB19532      Size 100 ug

## Applications



### Western Blot (Tissue lysate)

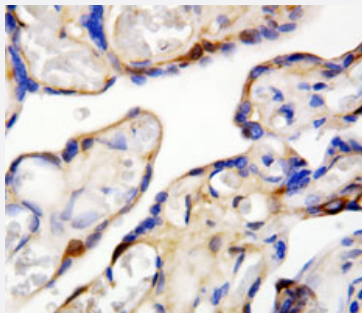
Western blot analysis of tissue extracts with DDT polyclonal antibody (Cat # PAB19532).

Lane 1, rat brain tissue lysate.

Lane 2, rat pancreas tissue lysate.

Lane 3, rat liver tissue lysate.

Lane 4, rat lung tissue lysate.



### Immunohistochemistry (Formalin/PFA-fixed paraffin-embedded sections)

Immunohistochemical staining of paraffin-embedded human placenta specimen tissue section with DDT polyclonal antibody (Cat # PAB19532).

## Specification

<b>Product Description</b>	Rabbit polyclonal antibody raised against synthetic peptide of DDT.
<b>Immunogen</b>	A synthetic peptide corresponding to amino acids at C-terminus of human DDT.
<b>Host</b>	Rabbit
<b>Reactivity</b>	Human, Mouse, Rat
<b>Specificity</b>	It different from the related mouse and rat sequence by two amino acids.
<b>Form</b>	Lyophilized

<b>Purification</b>	Immunoaffinity purification
<b>Isotype</b>	IgG
<b>Recommend Usage</b>	Western Blot (1 ug/mL) Immunohistochemistry (Formalin/PFA-fixed paraffin-embedded sections) (1 ug/mL) The optimal working dilution should be determined by the end user.
<b>Storage Buffer</b>	Lyophilized from 0.9 mg NaCl, 0.2 mg Na <sub>2</sub> HPO <sub>4</sub> (5 mg BSA, 0.05 mg sodium azide, 0.05 mg Thimerosal)
<b>Storage Instruction</b>	Store at -20°C on dry atmosphere. After reconstitution with 200 uL of deionized water and concentration will be 500 ug/mL, store at -20°C or lower. Aliquot to avoid repeated freezing and thawing.
<b>Note</b>	This product contains sodium azide and thimerosal: POISONOUS AND HAZARDOUS SUBSTANCE which should be handled by trained staff only.

## Applications

- Western Blot (Tissue lysate)

Western blot analysis of tissue extracts with DDT polyclonal antibody (Cat # PAB19532).

Lane 1, rat brain tissue lysate.

Lane 2, rat pancreas tissue lysate.

Lane 3, rat liver tissue lysate.

Lane 4, rat lung tissue lysate.

- Immunohistochemistry (Formalin/PFA-fixed paraffin-embedded sections)

Immunohistochemical staining of paraffin-embedded human placenta specimen tissue section with DDT polyclonal antibody (Cat # PAB19532).

## Gene Info — DDT

<b>Entrez GeneID</b>	<a href="#">1652</a>
<b>Gene Name</b>	DDT
<b>Gene Alias</b>	DDCT
<b>Gene Description</b>	D-dopachrome tautomerase
<b>Omim ID</b>	<a href="#">602750</a>
<b>Gene Ontology</b>	<a href="#">Hyperlink</a>

**Gene Summary**

D-dopachrome tautomerase converts D-dopachrome into 5,6-dihydroxyindole. The DDT gene is related to the migration inhibitory factor (MIF) in terms of sequence, enzyme activity, and gene structure. DDT and MIF are closely linked on chromosome 22. [provided by RefSeq]

**Other Designations**

D-dopachrome decarboxylase

## Publication Reference

- [Overexpression of D-dopachrome tautomerase increases ultraviolet B irradiation-induced skin tumorigenesis in mice.](#)

Yoko Yoshihisa, Mati Ur Rehman, Tsugunobu Andoh, Yoshiaki Tabuchi, Teruhiko Makino, Tadamichi Shimizu.

FASEB Journal 2021 Jul; 35(7):e21671.

Application: IHC-P, WB-Ti, WB-Tr, Mouse, Mouse dorsal skin tumors, Mouse keratinocytes

- [Role of macrophage migration inhibitory factor in heat-induced apoptosis in keratinocytes.](#)

Yoshihisa Y, Rehman MU, Kondo T, Shimizu T.

FASEB Journal 2016 Nov; 30(11):3870.

Application: WB-Ce, WB-Tr, Mouse, Keratinocytes

## Disease

- [Cardiovascular Diseases](#)
- [Diabetes Mellitus](#)
- [Edema](#)