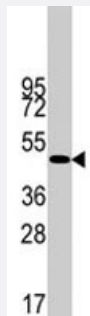


DES polyclonal antibody

Catalog # PAB1953

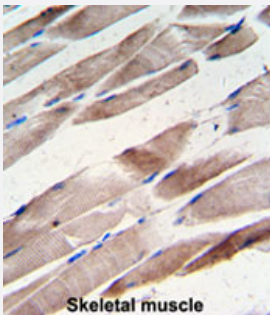
Size 400 uL

Applications



Western Blot (Cell lysate)

Western blot analysis of DES polyclonal antibody (Cat # PAB1953) in NCI-H460 cell line lysates (35 ug/lane). DES (arrow) was detected using the purified polyclonal antibody.



Immunohistochemistry (Formalin/PFA-fixed paraffin-embedded sections)

Formalin-fixed and paraffin-embedded human hepatocarcinoma reacted with DES polyclonal antibody (Cat # PAB1953), which was peroxidase-conjugated to the secondary antibody, followed by AEC staining.

This data demonstrates the use of this antibody for immunohistochemistry; clinical relevance has not been evaluated.

Specification

Product Description	Rabbit polyclonal antibody raised against synthetic peptide of DES.
Immunogen	A synthetic peptide (conjugated with KLH) corresponding to residues surrounding T16 of human DES.
Host	Rabbit
Reactivity	Human
Form	Liquid
Purification	Protein A purification

Recommend Usage	Western Blot (1:1000) The optimal working dilution should be determined by the end user.
Storage Buffer	In PBS (0.09% sodium azide)
Storage Instruction	Store at 4°C. For long term storage store at -20°C. Aliquot to avoid repeated freezing and thawing.
Note	This product contains sodium azide: a POISONOUS AND HAZARDOUS SUBSTANCE which should be handled by trained staff only.

Applications

- Western Blot (Cell lysate)

Western blot analysis of DES polyclonal antibody (Cat # PAB1953) in NCI-H460 cell line lysates (35 ug/lane). DES (arrow) was detected using the purified polyclonal antibody.

- Immunohistochemistry (Formalin/PFA-fixed paraffin-embedded sections)

Formalin-fixed and paraffin-embedded human hepatocarcinoma reacted with DES polyclonal antibody (Cat # PAB1953), which was peroxidase-conjugated to the secondary antibody, followed by AEC staining.

This data demonstrates the use of this antibody for immunohistochemistry; clinical relevance has not been evaluated.

Gene Info — DES

Entrez GeneID	1674
Protein Accession#	NP_001918;P17661
Gene Name	DES
Gene Alias	CMD1I, CSM1, CSM2, FLJ12025, FLJ39719, FLJ41013, FLJ41793
Gene Description	desmin
Omim ID	125660 601419 604765
Gene Ontology	Hyperlink
Gene Summary	This gene encodes a muscle-specific class III intermediate filament. Homopolymers of this protein form a stable intracytoplasmic filamentous network connecting myofibrils to each other and to the plasma membrane. Mutations in this gene are associated with desmin-related myopathy, a familial cardiac and skeletal myopathy (CSM), and with distal myopathies. [provided by RefSeq]
Other Designations	OTTHUMP00000064865 intermediate filament protein

Publication Reference

- [Desmin myopathy: a multisystem disorder involving skeletal, cardiac, and smooth muscle.](#)

Ariza A, Coll J, Fernandez-Figueras MT, Lopez MD, Mate JL, Garcia O, Fernandez-Vasalo A, Navas-Palacios JJ.

Human Pathology 1995 Sep; 26(9):1032.

Application: IHC-Fr, Human, Deltoid muscle biopsy specimen

- [Human desmin-coding gene: complete nucleotide sequence, characterization and regulation of expression during myogenesis and development.](#)

Li ZL, Lilienbaum A, Butler-Browne G, Paulin D.

Gene 1989 May; 78(2):243.

Pathway

- [Arrhythmogenic right ventricular cardiomyopathy \(ARVC\)](#)
- [Hypertrophic cardiomyopathy \(HCM\)](#)

Disease

- [Cardiomyopathy](#)
- [Cardiovascular Diseases](#)
- [Diabetes Mellitus](#)
- [Edema](#)