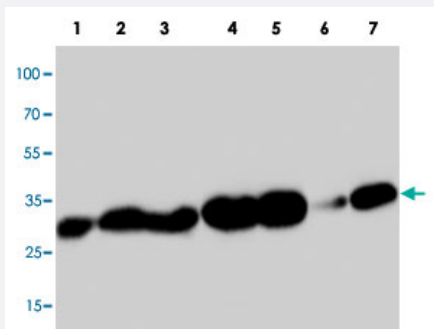


PDPN polyclonal antibody

Catalog # PAB19505 Size 100 ug

Applications

Western Blot (Tissue lysate)



Western blot analysis of tissue extracts with PDPN polyclonal antibody (Cat # PAB19505).

Lane 1, mouse liver tissue lysate.

Lane 2, mouse brain tissue lysate.

Lane 3, mouse kidney tissue lysate.

Lane 4, mouse spleen tissue lysate.

Lane 5, mouse thymus tissue lysate.

Lane 6, mouse lung tissue lysate.

Lane 7, mouse ovarian tissue lysate.

Specification

Product Description	Rabbit polyclonal antibody raised against synthetic peptide of PDPN.
Immunogen	A synthetic peptide corresponding to amino acids at C-terminus of human PDPN.
Host	Rabbit
Reactivity	Human
Specificity	It identical to the rat and mouse sequence.
Form	Lyophilized
Purification	Immunoaffinity purification
Isotype	IgG
Recommend Usage	Western Blot (1 ug/mL) The optimal working dilution should be determined by the end user.

Storage Buffer	Lyophilized from 0.9 mg NaCl, 0.2 mg Na ₂ HPO ₄ (5 mg BSA, 0.05 mg sodium azide, 0.05 mg Thimerosal)
Storage Instruction	Store at -20°C on dry atmosphere. After reconstitution with 200 uL of deionized water and concentration will be 500 ug/mL, store at -20°C or lower. Aliquot to avoid repeated freezing and thawing.
Note	This product contains sodium azide and thimerosal: POISONOUS AND HAZARDOUS SUBSTANCE which should be handled by trained staff only.

Applications

- Western Blot (Tissue lysate)

Western blot analysis of tissue extracts with PDPN polyclonal antibody (Cat # PAB19505).

Lane 1, mouse liver tissue lysate.

Lane 2, mouse brain tissue lysate.

Lane 3, mouse kidney tissue lysate.

Lane 4, mouse spleen tissue lysate.

Lane 5, mouse thymus tissue lysate.

Lane 6, mouse lung tissue lysate.

Lane 7, mouse ovarian tissue lysate.

Gene Info — PDPN

Entrez GeneID	10630
Gene Name	PDPN
Gene Alias	AGGRUS, GP36, GP40, Gp38, HT1A-1, OTS8, PA2.26, T1A, T1A-2
Gene Description	podoplanin
Omim ID	608863
Gene Ontology	Hyperlink
Gene Summary	This gene encodes a type-I integral membrane glycoprotein with diverse distribution in human tissues. The physiological function of this protein may be related to its mucin-type character. The homologous protein in other species has been described as a differentiation antigen and influenza-virus receptor. The specific function of this protein has not been determined but it has been proposed as a marker of lung injury. Alternatively spliced transcript variants encoding different isoforms have been identified. [provided by RefSeq]
Other Designations	OTTHUMP00000009640 OTTHUMP000000044504 glycoprotein, 36-KD hT1alpha-1 hT1alpha-2 lung type I cell membrane associated glycoprotein lung type-I cell membrane-associated glycoprotein lung type-I cell membrane-associated glycoprotein (T1A-2)

Disease

- [Genetic Predisposition to Disease](#)
- [Lymphedema](#)
- [Ovarian Neoplasms](#)
- [Tobacco Use Disorder](#)