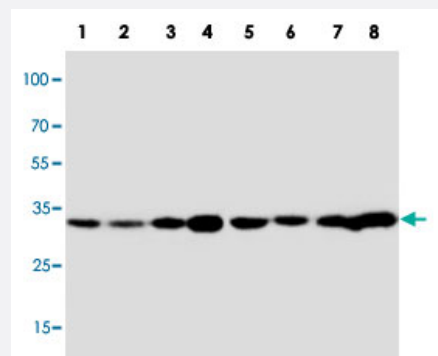


# APOD polyclonal antibody

Catalog # PAB19500      Size 100 ug

## Applications

### Western Blot



Western blot analysis of tissue and cell extracts with APOD polyclonal antibody (Cat # PAB19500).

Lane 1, rat liver tissue lysate.

Lane 2, rat small intestine tissue lysate.

Lane 3, rat brain tissue lysate.

Lane 4, rat testicular tissue lysate.

Lane 5, MCF-7 whole cell lysate.

Lane 6, HeLa whole cell lysate.

Lane 7, SMMC whole cell lysate.

Lane 8, PC-12 whole cell lysate.

Lane 9, COLO 320 whole cell lysate.

## Specification

<b>Product Description</b>	Rabbit polyclonal antibody raised against synthetic peptide of APOD.
<b>Immunogen</b>	A synthetic peptide corresponding to amino acids at C-terminus of human APOD.
<b>Host</b>	Rabbit
<b>Reactivity</b>	Human
<b>Specificity</b>	It identical to the related rat and mouse sequence.
<b>Form</b>	Lyophilized
<b>Purification</b>	Immunoaffinity purification
<b>Isotype</b>	IgG

<b>Recommend Usage</b>	Western Blot (1 ug/mL) The optimal working dilution should be determined by the end user.
<b>Storage Buffer</b>	Lyophilized from 0.9 mg NaCl, 0.2 mg Na <sub>2</sub> HPO <sub>4</sub> (5 mg BSA, 0.05 mg sodium azide, 0.05 mg Thimerosal)
<b>Storage Instruction</b>	Store at -20°C on dry atmosphere. After reconstitution with 200 uL of deionized water and concentration will be 500 ug/mL, store at -20°C or lower. Aliquot to avoid repeated freezing and thawing.
<b>Note</b>	This product contains sodium azide and thimerosal: POISONOUS AND HAZARDOUS SUBSTANCE which should be handled by trained staff only.

## Applications

- Western Blot

Western blot analysis of tissue and cell extracts with APOD polyclonal antibody (Cat # PAB19500).

Lane 1, rat liver tissue lysate.

Lane 2, rat small intestine tissue lysate.

Lane 3, rat brain tissue lysate.

Lane 4, rat testicular tissue lysate.

Lane 5, MCF-7 whole cell lysate.

Lane 6, HeLa whole cell lysate.

Lane 7, SMMC whole cell lysate.

Lane 8, PC-12 whole cell lysate.

Lane 9, COLO 320 whole cell lysate.

## Gene Info — APOD

<b>Entrez GeneID</b>	<a href="#">347</a>
<b>Gene Name</b>	APOD
<b>Gene Alias</b>	-
<b>Gene Description</b>	apolipoprotein D
<b>Omim ID</b>	<a href="#">107740</a>
<b>Gene Ontology</b>	<a href="#">Hyperlink</a>

**Gene Summary**

This gene encodes a component of high density lipoprotein that has no marked similarity to other apolipoprotein sequences. It has a high degree of homology to plasma retinol-binding protein and other members of the alpha 2 microglobulin protein superfamily of carrier proteins, also known as lipocalins. This glycoprotein is closely associated with the enzyme lecithin:cholesterol acyltransferase - an enzyme involved in lipoprotein metabolism. [provided by RefSeq]

**Other Designations**

-

**Disease**

- [Alzheimer disease](#)
- [Atherosclerosis](#)
- [Cardiovascular Diseases](#)
- [Cognition](#)
- [Coronary Artery Disease](#)
- [Diabetes Mellitus](#)
- [Edema](#)
- [Genetic Predisposition to Disease](#)
- [Schizophrenia](#)