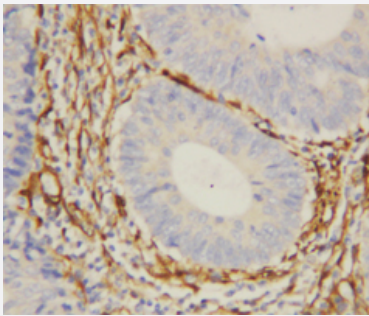


# LGALS1 polyclonal antibody

Catalog # PAB19489      Size 100 ug

## Applications



### Immunohistochemistry (Formalin/PFA-fixed paraffin-embedded sections)

Immunohistochemical staining of paraffin-embedded human intestine tissue section with LGALS1 polyclonal antibody (Cat # PAB19489).

## Specification

<b>Product Description</b>	Rabbit polyclonal antibody raised against synthetic peptide of LGALS1.
<b>Immunogen</b>	A synthetic peptide corresponding to amino acids at C-terminus of human LGALS1.
<b>Host</b>	Rabbit
<b>Reactivity</b>	Human
<b>Specificity</b>	It different from the related rat and mouse sequences by one amino acid.
<b>Form</b>	Lyophilized
<b>Purification</b>	Immunoaffinity purification
<b>Isotype</b>	IgG
<b>Recommend Usage</b>	Western Blot (1 ug/mL) Immunohistochemistry (Formalin/PFA-fixed paraffin-embedded sections) (1 ug/mL) The optimal working dilution should be determined by the end user.
<b>Storage Buffer</b>	Lyophilized from 0.9 mg NaCl, 0.2 mg Na <sub>2</sub> HPO <sub>4</sub> (5 mg BSA, 0.05 mg sodium azide, 0.05 mg Thimerosal)

**Storage Instruction**

Store at -20°C on dry atmosphere.

After reconstitution with 200 uL of deionized water and concentration will be 500 ug/mL, store at -20°C or lower.

Aliquot to avoid repeated freezing and thawing.

**Note**

This product contains sodium azide and thimerosal: POISONOUS AND HAZARDOUS SUBSTANCE which should be handled by trained staff only.

## Applications

- Western Blot
- Immunohistochemistry (Formalin/PFA-fixed paraffin-embedded sections)

Immunohistochemical staining of paraffin-embedded human intestine tissue section with LGALS1 polyclonal antibody (Cat # PAB19489).

## Gene Info — LGALS1

**Entrez GeneID**[3956](#)**Gene Name**

LGALS1

**Gene Alias**

DKFZp686E23103, GAL1, GBP

**Gene Description**

lectin, galactoside-binding, soluble, 1

**Omim ID**[150570](#)**Gene Ontology**[Hyperlink](#)**Gene Summary**

The galectins are a family of beta-galactoside-binding proteins implicated in modulating cell-cell and cell-matrix interactions. This gene product may act as an autocrine negative growth factor that regulates cell proliferation. [provided by RefSeq]

**Other Designations**

OTTHUMP00000028982|S-Lac lectin 1|beta-galactoside-binding lectin L-14-|galaptin|galectin 1|galectin-1|lactose-binding lectin 1

## Disease

- [Cardiovascular Diseases](#)
- [Diabetes Mellitus](#)

- [Edema](#)
- [Genetic Predisposition to Disease](#)
- [Myasthenia Gravis](#)
- [Thyroid Neoplasms](#)