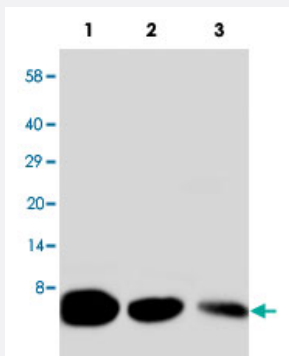


# Egf polyclonal antibody

Catalog # PAB19483      Size 100 ug

## Applications



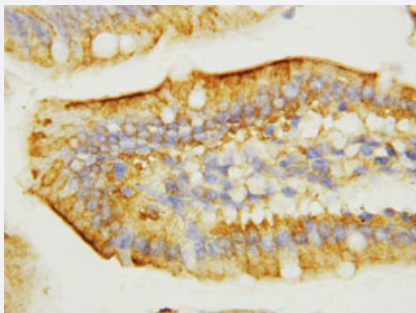
### Western Blot (Recombinant protein)

Western blot analysis of recombinant mouse Egf protein with Egf polyclonal antibody (Cat # PAB19483).

Lane 1, 10 ng.

Lane 2, 5 ng.

Lane 3, 2.5 ng.



### Immunohistochemistry (Formalin/PFA-fixed paraffin-embedded sections)

Immunohistochemical staining of paraffin-embedded mouse intestine tissue section with Egf polyclonal antibody (Cat # PAB19483).

## Specification

### Product Description

Rabbit polyclonal antibody raised against synthetic peptide of Egf.

### Immunogen

A synthetic peptide corresponding to amino acids at C-terminus of mouse Egf.

### Host

Rabbit

### Reactivity

Mouse

### Specificity

It identical to the related human and rat sequence.

### Form

Lyophilized

<b>Purification</b>	Immunoaffinity purification
<b>Isotype</b>	IgG
<b>Recommend Usage</b>	Western Blot (1 ug/mL) Immunohistochemistry (Formalin/PFA-fixed paraffin-embedded sections) (1 ug/mL) The optimal working dilution should be determined by the end user.
<b>Storage Buffer</b>	Lyophilized from 0.9 mg NaCl, 0.2 mg Na <sub>2</sub> HPO <sub>4</sub> (5 mg BSA, 0.05 mg sodium azide, 0.05 mg Thimerosal)
<b>Storage Instruction</b>	Store at -20°C on dry atmosphere. After reconstitution with 200 uL of deionized water and concentration will be 500 ug/mL, store at -20°C or lower. Aliquot to avoid repeated freezing and thawing.
<b>Note</b>	This product contains sodium azide and thimerosal: POISONOUS AND HAZARDOUS SUBSTANCE which should be handled by trained staff only.

## Applications

- Western Blot (Recombinant protein)

Western blot analysis of recombinant mouse Egf protein with Egf polyclonal antibody (Cat # PAB19483).

Lane 1, 10 ng.

Lane 2, 5 ng.

Lane 3, 2.5 ng.

- Immunohistochemistry (Formalin/PFA-fixed paraffin-embedded sections)

Immunohistochemical staining of paraffin-embedded mouse intestine tissue section with Egf polyclonal antibody (Cat # PAB19483).

## Gene Info — Egf

<b>Entrez GeneID</b>	<a href="#">13645</a>
<b>Gene Name</b>	Egf
<b>Gene Alias</b>	AI790464
<b>Gene Description</b>	epidermal growth factor
<b>Gene Ontology</b>	<a href="#">Hyperlink</a>
<b>Other Designations</b>	Pro-epidermal growth factor precursor (EGF)

## Publication Reference

- [FGF2/EGF contributes to brain neuroepithelial precursor proliferation and neurogenesis in rat embryos: the involvement of embryonic cerebro-spinal fluid.](#)

Lamus F, Martín C, Carnicero E, Moro JA, Fernández JMF, Mano A, Gato A, Alonso MI.

Developmental Dynamics 2020 Jan; 249(1):141.

Application: IHC-P, WB-Ti, Rat, Embryos, Skins