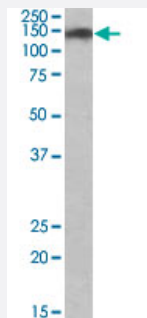


SMC2 polyclonal antibody

Catalog # PAB19471 Size 100 ug

Applications



Western Blot (Cell lysate)

SMC2 polyclonal antibody (Cat # PAB19471)(0.2 ug/mL) staining of HeLa lysate (35 ug protein in RIPA buffer). Primary incubation was 1 hour. Detected by chemiluminescence.

Specification

Product Description	Goat polyclonal antibody raised against synthetic peptide of SMC2.
Immunogen	A synthetic peptide corresponding to C-terminus of human SMC2.
Sequence	C-SKAKPPKGAHVEV
Host	Goat
Theoretical MW (kDa)	136
Reactivity	Human
Form	Liquid
Purification	Ammonium sulfate precipitation
Recommend Usage	ELISA (1:3200) Western Blot (0.2-0.6 ug/mL) The optimal working dilution should be determined by the end user.
Storage Buffer	In Tris saline, pH 7.3 (0.5% BSA, 0.02% sodium azide)

Storage Instruction

Store at -20°C.
Aliquot to avoid repeated freezing and thawing.

Note

This product contains sodium azide: a POISONOUS AND HAZARDOUS SUBSTANCE which should be handled by trained staff only.

Applications

- Western Blot (Cell lysate)

SMC2 polyclonal antibody (Cat # PAB19471)(0.2 ug/mL) staining of HeLa lysate (35 ug protein in RIPA buffer). Primary incubation was 1 hour. Detected by chemiluminescence.

- Enzyme-linked Immunoabsorbent Assay

Gene Info — SMC2

Entrez GeneID[10592](#)**Protein Accession#**[NP_006435.2](#)**Gene Name**

SMC2

Gene Alias

CAP-E, CAPE, FLJ10093, SMC2L1, hCAP-E

Gene Description

structural maintenance of chromosomes 2

Omim ID[605576](#)**Gene Ontology**[Hyperlink](#)**Gene Summary**

yeast)-like 1|SMC2 structural maintenance of chromosomes 2-like 1|chromosome-associated protein E|structural maintenance of chromosomes (SMC) family member

Other Designations

OTTHUMP00000021818|OTTHUMP00000021819|SMC2 (structural maintenance of chromosomes 2, yeast)-like 1|SMC2 structural maintenance of chromosomes 2-like 1|chromosome-associated protein E|structural maintenance of chromosomes (SMC) family member, chromosome-as