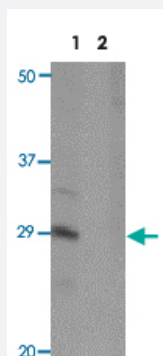


SLAMF1 polyclonal antibody

Catalog # PAB19452 Size 100 ug

Applications

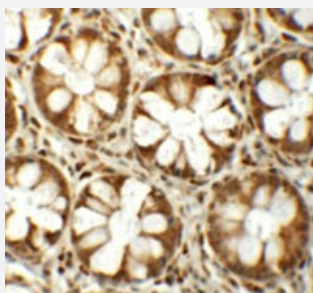


Western Blot (Tissue lysate)

Western blot analysis of SLAMF1 in rat colon tissue lysate with SLAMF1 polyclonal antibody (Cat # PAB19452) at 1 ug/mL.

Lane 1 : The absence of blocking peptide.

Lane 2 : The presence of blocking peptide.



Immunohistochemistry

Immunohistochemical staining of human colon cells with SLAMF1 polyclonal antibody (Cat # PAB19452) at 5 ug/mL.

Specification

Product Description	Rabbit polyclonal antibody raised against synthetic peptide of SLAMF1.
Immunogen	A synthetic peptide corresponding to 15 amino acids near N-terminus of human SLAMF1.
Host	Rabbit
Reactivity	Human, Mouse, Rat
Specificity	Two isoforms of SLAMF1 are known to exist; this antibody will recognize both isoforms. SLAMF1 antibody is predicted to not cross-react with other SLAM protein family members.
Form	Liquid

Purification	Peptide affinity purification
Concentration	1 mg/mL
Recommend Usage	Western Blot (1 ug/mL) Immunohistochemistry (5 ug/mL) The optimal working dilution should be determined by the end user.
Storage Buffer	In PBS (0.02% sodium azide)
Storage Instruction	Store at 4°C for up to one year. Aliquot to avoid repeated freezing and thawing.
Note	This product contains sodium azide: a POISONOUS AND HAZARDOUS SUBSTANCE which should be handled by trained staff only.

Applications

- Western Blot (Tissue lysate)

Western blot analysis of SLAMF1 in rat colon tissue lysate with SLAMF1 polyclonal antibody (Cat # PAB19452) at 1 ug/mL.

Lane 1 : The absence of blocking peptide.

Lane 2 : The presence of blocking peptide.

- Immunohistochemistry

Immunohistochemical staining of human colon cells with SLAMF1 polyclonal antibody (Cat # PAB19452) at 5 ug/mL.

- Enzyme-linked Immunoabsorbent Assay

Gene Info — SLAMF1

Entrez GeneID	6504
Protein Accession#	NP_003028
Gene Name	SLAMF1
Gene Alias	CD150, CDw150, SLAM
Gene Description	signaling lymphocytic activation molecule family member 1
Omim ID	603492
Gene Ontology	Hyperlink
Other Designations	OTTHUMP00000025670 OTTHUMP00000060252

Disease

- [Genetic Predisposition to Disease](#)
- [Lung Neoplasms](#)
- [Pulmonary Disease](#)
- [Tobacco Use Disorder](#)
- [Urinary Bladder Neoplasms](#)
- [Werner syndrome](#)