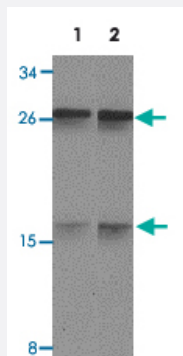


CD48 polyclonal antibody

Catalog # PAB19450 Size 100 ug

Applications



Western Blot (Tissue lysate)

Western blot analysis of SLAMF2 in rat lung tissue lysate with CD48 polyclonal antibody (Cat # PAB19450) at 1 ug/mL (lane 1) and 2 ug/mL (lane 2).

Specification

Product Description	Rabbit polyclonal antibody raised against synthetic peptide of CD48.
Immunogen	A synthetic peptide corresponding to 19 amino acids near the center region of human CD48.
Host	Rabbit
Reactivity	Human, Mouse, Rat
Specificity	Two isoforms of CD48 are known to exist; this antibody will recognize both isoforms. SLAMF2 antibody is predicted to not cross-react with other SLAM protein family members.
Form	Liquid
Purification	Affinity purification
Recommend Usage	Western blot (1-2 ug/mL) The optimal working dilution should be determined by the end user.
Storage Buffer	In PBS (0.02% sodium azide)
Storage Instruction	Store at 4°C for three months. For long term storage store at -20°C. Aliquot to avoid repeated freezing and thawing.

Note

This product contains sodium azide: a POISONOUS AND HAZARDOUS SUBSTANCE which should be handled by trained staff only.

Applications

- Western Blot (Tissue lysate)

Western blot analysis of SLAMF2 in rat lung tissue lysate with CD48 polyclonal antibody (Cat # PAB19450) at 1 ug/mL (lane 1) and 2 ug/mL (lane 2).

- Enzyme-linked Immunoabsorbent Assay

Gene Info — CD48

Entrez GeneID [962](#)

Gene Name CD48

Gene Alias BCM1, BLAST, BLAST1, MEM-102, SLAMF2, hCD48, mCD48

Gene Description CD48 molecule

Omim ID [109530](#)

Gene Ontology [Hyperlink](#)

Gene Summary BLAST1 is the designation used for an activation-associated cell surface glycoprotein of 40 to 45 kD expressed primarily in mitogen-stimulated human lymphocytes. The protein sequence predicted by the cDNA encoding BLAST1 indicates that BLAST1 is a member of the immunoglobulin supergene family. Yokoyama (1991) identified the BLAST1 activation/adhesion molecule as CD48.[s applied by OMIM

Other Designations CD48 antigen (B-cell membrane protein)|OTTHUMP00000025680|OTTHUMP00000060268

Pathway

- [Natural killer cell mediated cytotoxicity](#)

Disease

- [Adenocarcinoma](#)

- [Cardiovascular Diseases](#)
- [Diabetes Mellitus](#)
- [Edema](#)
- [Esophageal Neoplasms](#)
- [Genetic Predisposition to Disease](#)
- [Schizophrenia](#)