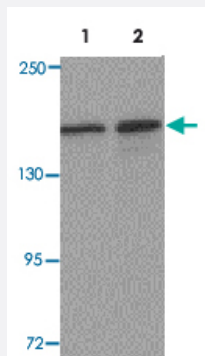


ROCK2 polyclonal antibody

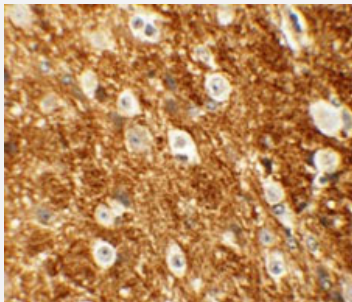
Catalog # PAB19448 Size 100 ug

Applications



Western Blot (Tissue lysate)

Western blot analysis of ROCK2 in mouse brain tissue lysate with ROCK2 polyclonal antibody (Cat # PAB19448) at 1 ug/mL (lane 1) and 2 ug/mL (lane 2).



Immunohistochemistry

Immunohistochemical staining of mouse brain cells with ROCK2 polyclonal antibody (Cat # PAB19448) at 5 ug/mL.

Specification

Product Description	Rabbit polyclonal antibody raised against synthetic peptide of ROCK2.
Immunogen	A synthetic peptide corresponding to 15 amino acids near internal region of human ROCK2.
Host	Rabbit
Reactivity	Human, Mouse, Rat
Specificity	Three isoforms of ROCK2 are known to exist; this antibody recognizes all three isoforms. ROCK2 antibody is predicted to not cross-react with other ROCK protein family members.
Form	Liquid

Purification	Peptide affinity purification
Concentration	1 mg/mL
Recommend Usage	Western Blot (1-2 ug/mL) Immunohistochemistry (5 ug/mL) The optimal working dilution should be determined by the end user.
Storage Buffer	In PBS (0.02% sodium azide)
Storage Instruction	Store at 4°C for three months. For long term storage store at -20°C. Aliquot to avoid repeated freezing and thawing.
Note	This product contains sodium azide: a POISONOUS AND HAZARDOUS SUBSTANCE which should be handled by trained staff only.

Applications

- Western Blot (Tissue lysate)

Western blot analysis of ROCK2 in mouse brain tissue lysate with ROCK2 polyclonal antibody (Cat # PAB19448) at 1 ug/mL (lane 1) and 2 ug/mL (lane 2).

- Immunohistochemistry

Immunohistochemical staining of mouse brain cells with ROCK2 polyclonal antibody (Cat # PAB19448) at 5 ug/mL.

- Enzyme-linked Immunoabsorbent Assay

Gene Info — ROCK2

Entrez GeneID	9475
Protein Accession#	NP_004841
Gene Name	ROCK2
Gene Alias	KIAA0619
Gene Description	Rho-associated, coiled-coil containing protein kinase 2
Omim ID	604002
Gene Ontology	Hyperlink

Gene Summary

The protein encoded by this gene is a serine/threonine kinase that regulates cytokinesis, smooth muscle contraction, the formation of actin stress fibers and focal adhesions, and the activation of the c-fos serum response element. This protein, which is an isozyme of ROCK1 is a target for the small GTPase Rho. [provided by RefSeq]

Other Designations

OTTHUMP00000195104

Pathway

- [Axon guidance](#)
- [Chemokine signaling pathway](#)
- [Focal adhesion](#)
- [Leukocyte transendothelial migration](#)
- [Pathogenic Escherichia coli infection - EHEC](#)
- [Regulation of actin cytoskeleton](#)
- [TGF-beta signaling pathway](#)
- [Vascular smooth muscle contraction](#)
- [Wnt signaling pathway](#)

Disease

- [Breast Neoplasms](#)
- [Cardiovascular Diseases](#)
- [Diabetes Mellitus](#)
- [Edema](#)
- [Genetic Predisposition to Disease](#)
- [HIV Infections](#)
- [Hypertension](#)
- [Kidney Failure](#)
- [Liver Cirrhosis](#)

- [Neoplasm Metastasis](#)
- [Pre-Eclampsia](#)