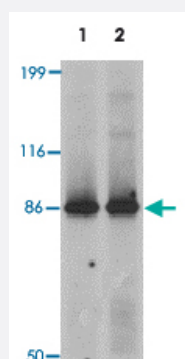


# LRRFIP2 polyclonal antibody

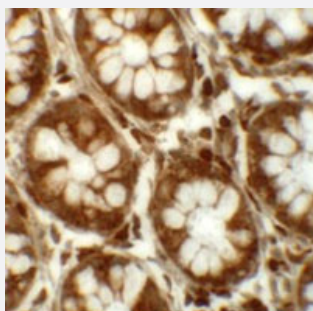
Catalog # PAB19447      Size 100 ug

## Applications



### Western Blot (Tissue lysate)

Western blot analysis of LRRFIP2 in rat colon tissue lysate with LRRFIP2 polyclonal antibody (Cat # PAB19447) at 0.5 ug/mL (lane 1) and 1 ug/mL (lane 2).



### Immunohistochemistry

Immunohistochemical staining of human colon cells with LRRFIP2 polyclonal antibody (Cat # PAB19447) at 5 ug/mL.

## Specification

<b>Product Description</b>	Rabbit polyclonal antibody raised against synthetic peptide of LRRFIP2.
<b>Immunogen</b>	A synthetic peptide corresponding to 17 amino acids near C-terminus of human LRRFIP2.
<b>Host</b>	Rabbit
<b>Reactivity</b>	Human, Mouse, Rat
<b>Specificity</b>	Three isoforms of LRRFIP2 are known to exist; this antibody will recognize all three. LRRFIP2 antibody is predicted to not cross-react with other LRRFIP family members.
<b>Form</b>	Liquid

Purification	Peptide affinity purification
Concentration	1 mg/mL
Recommend Usage	Western Blot (0.5 and 1 ug/mL) Immunohistochemistry (5 ug/mL) The optimal working dilution should be determined by the end user.
Storage Buffer	In PBS (0.02% sodium azide)
Storage Instruction	Store at 4°C for three months. For long term storage store at -20°C. Aliquot to avoid repeated freezing and thawing.
Note	This product contains sodium azide: a POISONOUS AND HAZARDOUS SUBSTANCE which should be handled by trained staff only.

## Applications

- Western Blot (Tissue lysate)

Western blot analysis of LRRFIP2 in rat colon tissue lysate with LRRFIP2 polyclonal antibody (Cat # PAB19447) at 0.5 ug/mL (lane 1) and 1 ug/mL (lane 2).

- Immunohistochemistry

Immunohistochemical staining of human colon cells with LRRFIP2 polyclonal antibody (Cat # PAB19447) at 5 ug/mL.

- Enzyme-linked Immunoabsorbent Assay

## Gene Info — LRRFIP2

Entrez GeneID	<a href="#">9209</a>
Protein Accession#	<a href="#">NP_006300</a>
Gene Name	LRRFIP2
Gene Alias	DKFZp434H2035, FLJ20248, FLJ22683, FLJ58304, HUF1-2
Gene Description	leucine rich repeat (in FLII) interacting protein 2
Gene Ontology	<a href="#">Hyperlink</a>
Other Designations	-

## Disease

- [Tobacco Use Disorder](#)