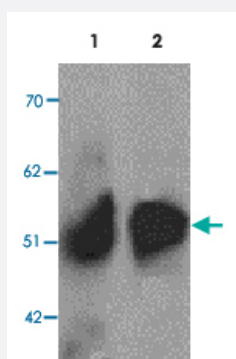


# SLC39A8 polyclonal antibody

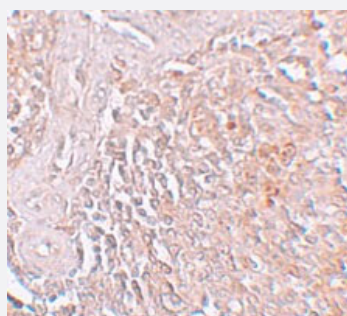
Catalog # PAB19445      Size 100 ug

## Applications



### Western Blot (Tissue lysate)

Western blot analysis of ZIP8 in human spleen tissue lysate with SLC39A8 polyclonal antibody (Cat # PAB19445) at 1 ug/mL (lane 1) and 2 ug/mL (lane 2).



### Immunohistochemistry

Immunohistochemical staining of human spleen cells with SLC39A8 polyclonal antibody (Cat # PAB19445) at 5 ug/mL.

## Specification

<b>Product Description</b>	Rabbit polyclonal antibody raised against synthetic peptide of SLC39A8.
<b>Immunogen</b>	A synthetic peptide corresponding to 18 amino acids near C-terminus of human SLC39A8.
<b>Host</b>	Rabbit
<b>Reactivity</b>	Human
<b>Specificity</b>	This antibody is predicted to not cross-react with other ZIP family members.
<b>Form</b>	Liquid

<b>Purification</b>	Peptide affinity purification
<b>Concentration</b>	1 mg/mL
<b>Recommend Usage</b>	Western Blot (1-2 ug/mL) Immunohistochemistry (5 ug/mL) The optimal working dilution should be determined by the end user.
<b>Storage Buffer</b>	In PBS (0.02% sodium azide)
<b>Storage Instruction</b>	Store at 4°C for three months. For long term storage store at -20°C. Aliquot to avoid repeated freezing and thawing.
<b>Note</b>	This product contains sodium azide: a POISONOUS AND HAZARDOUS SUBSTANCE which should be handled by trained staff only.

## Applications

- Western Blot (Tissue lysate)

Western blot analysis of ZIP8 in human spleen tissue lysate with SLC39A8 polyclonal antibody (Cat # PAB19445) at 1 ug/mL (lane 1) and 2 ug/mL (lane 2).

- Immunohistochemistry

Immunohistochemical staining of human spleen cells with SLC39A8 polyclonal antibody (Cat # PAB19445) at 5 ug/mL.

- Enzyme-linked Immunoabsorbent Assay

## Gene Info — SLC39A8

<b>Entrez GeneID</b>	<a href="#">64116</a>
<b>Protein Accession#</b>	<a href="#">NP_071437</a>
<b>Gene Name</b>	SLC39A8
<b>Gene Alias</b>	BIGM103, LZT-Hs6, PP3105, ZIP8
<b>Gene Description</b>	solute carrier family 39 (zinc transporter), member 8
<b>Omim ID</b>	<a href="#">608732</a>
<b>Gene Ontology</b>	<a href="#">Hyperlink</a>

**Gene Summary**

This gene encodes a member of the SLC39 family of solute-carrier genes, which show structural characteristics of zinc transporters. The encoded protein is glycosylated and found in the plasma membrane and mitochondria, and functions in the cellular import of zinc at the onset of inflammation. It is also thought to be the primary transporter of the toxic cation cadmium, which is found in cigarette smoke. Multiple transcript variants encoding different isoforms have been found for this gene. Additional alternatively spliced transcript variants of this gene have been described, but their full-length nature is not known. [provided by RefSeq]

**Other Designations**

BCG induced integral membrane protein BIGM103|LIV-1 subfamily of ZIP zinc transporter 6|Zrt- and Irt-like protein 8|solute carrier family 39 (metal ion transporter), member 8|zinc transporter ZIP8

**Disease**

- [Coronary Artery Disease](#)
- [Genetic Predisposition to Disease](#)
- [Kidney Failure](#)
- [Prostatic Neoplasms](#)