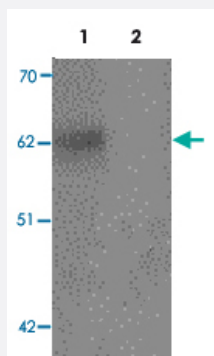


SPRYD3 polyclonal antibody

Catalog # PAB19436 Size 100 ug

Applications

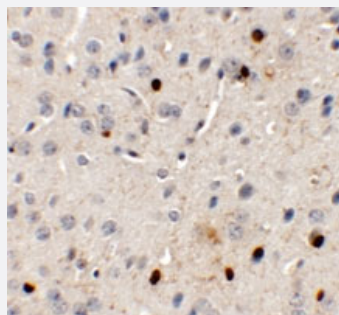


Western Blot (Tissue lysate)

Western blot analysis of SPRYD3 in human brain tissue lysate with SPRYD3 polyclonal antibody (Cat # PAB19436) at 1 ug/mL.

Lane 1 : The absence of blocking peptide.

Lane 2 : The presence of blocking peptide.



Immunohistochemistry

Immunohistochemical staining of mouse brain cells with SPRYD3 polyclonal antibody (Cat # PAB19436) at 5 ug/mL.

Specification

Product Description	Rabbit polyclonal antibody raised against synthetic peptide of SPRYD3.
Immunogen	A synthetic peptide corresponding to 16 amino acids near internal region of human SPRYD3.
Host	Rabbit
Reactivity	Human, Mouse, Rat
Specificity	SPRYD3 antibody is predicted to not cross-react with other SPRYD protein family members. At least two isoforms of SPRYD3 are known to exist.
Form	Liquid

Purification	Peptide affinity purification
Concentration	1 mg/mL
Recommend Usage	Western Blot (1 ug/mL) Immunohistochemistry (5 ug/mL) The optimal working dilution should be determined by the end user.
Storage Buffer	In PBS (0.02% sodium azide)
Storage Instruction	Store at 4°C for three months. For long term storage store at -20°C. Aliquot to avoid repeated freezing and thawing.
Note	This product contains sodium azide: a POISONOUS AND HAZARDOUS SUBSTANCE which should be handled by trained staff only.

Applications

- Western Blot (Tissue lysate)

Western blot analysis of SPRYD3 in human brain tissue lysate with SPRYD3 polyclonal antibody (Cat # PAB19436) at 1 ug/mL.

Lane 1 : The absence of blocking peptide.

Lane 2 : The presence of blocking peptide.

- Immunohistochemistry

Immunohistochemical staining of mouse brain cells with SPRYD3 polyclonal antibody (Cat # PAB19436) at 5 ug/mL.

- Enzyme-linked Immunoabsorbent Assay

Gene Info — SPRYD3

Entrez GeneID	84926
Protein Accession#	NP_116229
Gene Name	SPRYD3
Gene Alias	FLJ14800
Gene Description	SPRY domain containing 3
Gene Ontology	Hyperlink
Other Designations	-