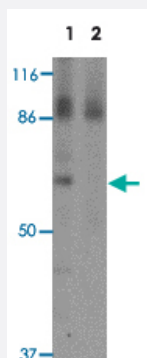


RBM35A polyclonal antibody

Catalog # PAB19429 Size 100 ug

Applications

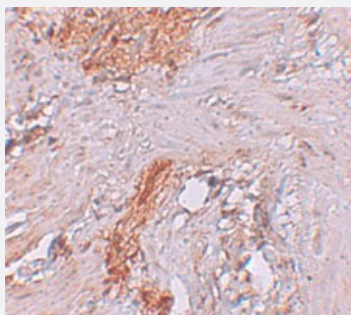


Western Blot (Tissue lysate)

Western blot analysis of RBM35A in rat colon tissue lysate with RBM35A polyclonal antibody (Cat # PAB19429) at 0.5 ug/mL.

Lane 1 : The absence of blocking peptide.

Lane 2 : The presence of blocking peptide.



Immunohistochemistry

Immunohistochemical staining of human colon cells with RBM35A polyclonal antibody (Cat # PAB19429) at 2.5 ug/mL.

Specification

Product Description	Rabbit polyclonal antibody raised against synthetic peptide of RBM35A.
Immunogen	A synthetic peptide corresponding to 18 amino acids near N-terminus of human RBM35A.
Host	Rabbit
Reactivity	Human, Mouse, Rat
Specificity	RBM35A antibody is predicted to not cross-react with other RBM35/ESRP family members. At least five isoforms of RBM35A are known to exist; this antibody will detect all five.
Form	Liquid

Purification	Peptide affinity purification
Concentration	1 mg/mL
Recommend Usage	Western Blot (0.5 ug/mL) Immunohistochemistry (2.5 ug/mL) The optimal working dilution should be determined by the end user.
Storage Buffer	In PBS (0.02% sodium azide)
Storage Instruction	Store at 4°C for three months. For long term storage store at -20°C. Aliquot to avoid repeated freezing and thawing.
Note	This product contains sodium azide: a POISONOUS AND HAZARDOUS SUBSTANCE which should be handled by trained staff only.

Applications

- Western Blot (Tissue lysate)

Western blot analysis of RBM35A in rat colon tissue lysate with RBM35A polyclonal antibody (Cat # PAB19429) at 0.5 ug/mL.

Lane 1 : The absence of blocking peptide.

Lane 2 : The presence of blocking peptide.

- Immunohistochemistry

Immunohistochemical staining of human colon cells with RBM35A polyclonal antibody (Cat # PAB19429) at 2.5 ug/mL.

- Enzyme-linked Immunoabsorbent Assay

Gene Info — RBM35A

Entrez GeneID	54845
Protein Accession#	NP_001030087
Gene Name	RBM35A
Gene Alias	FLJ20171
Gene Description	RNA binding motif protein 35A
Gene Ontology	Hyperlink
Gene Summary	ESPR1 is an epithelial cell-type-specific splicing regulator (Warzecha et al., 2009 [PubMed 19285943]).[supplied by OMIM]

Other Designations

-