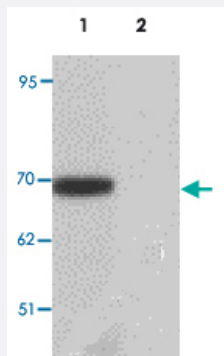


LRRTM1 polyclonal antibody

Catalog # PAB19414 Size 100 ug

Applications

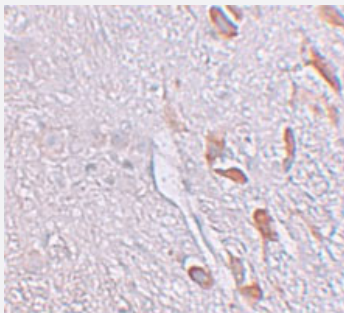


Western Blot (Tissue lysate)

Western blot analysis of LRRTM1 in mouse brain tissue lysate with LRRTM1 polyclonal antibody (Cat # PAB19414) at 1 ug/mL.

Lane 1 : The absence of blocking peptide.

Lane 2 : The presence of blocking peptide.



Immunohistochemistry

Immunohistochemical staining of human brain cells with LRRTM1 polyclonal antibody (Cat # PAB19414) at 5 ug/mL.

Specification

Product Description	Rabbit polyclonal antibody raised against synthetic peptide of LRRTM1.
Immunogen	A synthetic peptide corresponding to 17 amino acids near C-terminus of human LRRTM1.
Host	Rabbit
Reactivity	Human, Mouse, Rat
Specificity	LRRTM1 antibody is predicted to not cross-react with other LRRTM family members.
Form	Liquid

Purification	Peptide affinity purification
Concentration	1 mg/mL
Recommend Usage	Western Blot (1 ug/mL) Immunohistochemistry (5 ug/mL) The optimal working dilution should be determined by the end user.
Storage Buffer	In PBS (0.02% sodium azide)
Storage Instruction	Store at 4°C for three months. For long term storage store at -20°C. Aliquot to avoid repeated freezing and thawing.
Note	This product contains sodium azide: a POISONOUS AND HAZARDOUS SUBSTANCE which should be handled by trained staff only.

Applications

- Western Blot (Tissue lysate)

Western blot analysis of LRRTM1 in mouse brain tissue lysate with LRRTM1 polyclonal antibody (Cat # PAB19414) at 1 ug/mL.

Lane 1 : The absence of blocking peptide.

Lane 2 : The presence of blocking peptide.

- Immunohistochemistry

Immunohistochemical staining of human brain cells with LRRTM1 polyclonal antibody (Cat # PAB19414) at 5 ug/mL.

- Enzyme-linked Immunoabsorbent Assay

Gene Info — LRRTM1

Entrez GeneID	347730
Protein Accession#	AAH45113
Gene Name	LRRTM1
Gene Alias	FLJ32082
Gene Description	leucine rich repeat transmembrane neuronal 1
Omim ID	610867
Gene Ontology	Hyperlink
Other Designations	OTTHUMP00000194829 leucine-rich repeat transmembrane neuronal 1 protein