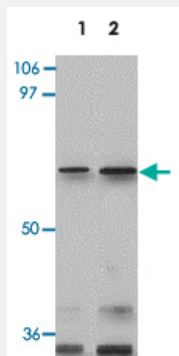


GLS2 polyclonal antibody

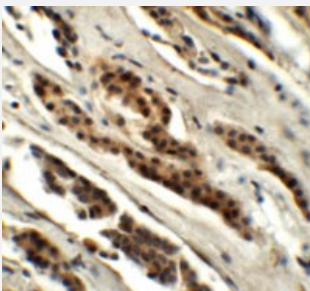
Catalog # PAB19411 Size 100 ug

Applications



Western Blot (Tissue lysate)

Western blot analysis of GLS2 in rat kidney tissue lysate with GLS2 polyclonal antibody (Cat # PAB19411) at 0.5 ug/mL (lane 1) and 1 ug/mL (lane 2).



Immunohistochemistry

Immunohistochemical staining of human kidney cells with GLS2 polyclonal antibody (Cat # PAB19411) at 5 ug/mL.

Specification

Product Description	Rabbit polyclonal antibody raised against synthetic peptide of GLS2.
Immunogen	A synthetic peptide corresponding to 18 amino acids near internal region of human GLS2.
Host	Rabbit
Reactivity	Human, Mouse, Rat
Specificity	GLS2 antibody is predicted to not cross-react with other catenin family members. Multiple isoforms of GLS2 are known to exist.
Form	Liquid

Purification	Peptide affinity purification
Concentration	1 mg/mL
Recommend Usage	Western Blot (0.5-1 ug/mL) Immunohistochemistry (5 ug/mL) The optimal working dilution should be determined by the end user.
Storage Buffer	In PBS (0.02% sodium azide)
Storage Instruction	Store at 4°C for up to one year. Aliquot to avoid repeated freezing and thawing.
Note	This product contains sodium azide: a POISONOUS AND HAZARDOUS SUBSTANCE which should be handled by trained staff only.

Applications

- Western Blot (Tissue lysate)

Western blot analysis of GLS2 in rat kidney tissue lysate with GLS2 polyclonal antibody (Cat # PAB19411) at 0.5 ug/mL (lane 1) and 1 ug/mL (lane 2).

- Immunohistochemistry

Immunohistochemical staining of human kidney cells with GLS2 polyclonal antibody (Cat # PAB19411) at 5 ug/mL.

- Enzyme-linked Immunoabsorbent Assay

Gene Info — GLS2

Entrez GeneID	27165
Protein Accession#	NP_037399
Gene Name	GLS2
Gene Alias	GA, GLS, LGA, MGC71567, hLGA
Gene Description	glutaminase 2 (liver, mitochondrial)
Omim ID	606365
Gene Ontology	Hyperlink

Gene Summary

The protein encoded by this gene is a mitochondrial phosphate-activated glutaminase that catalyzes the hydrolysis of glutamine to stoichiometric amounts of glutamate and ammonia. This protein is functionally similar to the kidney glutaminase but is a little smaller in size. Originally thought to be liver-specific, this protein has been found in other tissues as well. At least one transcribed pseudo gene has been found for this gene. [provided by RefSeq]

Other Designations

L-glutaminase|L-glutamine amidohydrolase|breast cell glutaminase|glutaminase 2|glutaminase G A|glutaminase I|glutaminase, liver|phosphate-activated glutaminase|phosphate-dependent glutaminase

Pathway

- [Alanine](#)
- [Arginine and proline metabolism](#)
- [D-Glutamine and D-glutamate metabolism](#)
- [Metabolic pathways](#)
- [Nitrogen metabolism](#)

Disease

- [Schizophrenia](#)