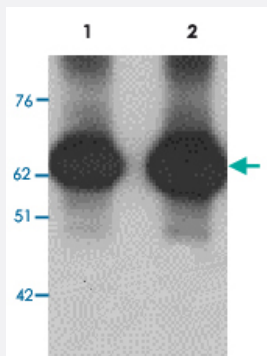


CTNNBL1 polyclonal antibody

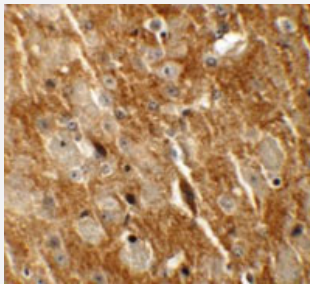
Catalog # PAB19409 Size 100 ug

Applications



Western Blot (Tissue lysate)

Western blot analysis of CTNNBL1 in human brain tissue lysate with CTNNBL1 polyclonal antibody (Cat # PAB19409) at 1 ug/mL (lane 1) and 2 ug/mL (lane 2).



Immunohistochemistry

Immunohistochemical staining of mouse brain cells with CTNNBL1 polyclonal antibody (Cat # PAB19409) at 5 ug/mL.

Specification

Product Description	Rabbit polyclonal antibody raised against synthetic peptide of CTNNBL1.
Immunogen	A synthetic peptide corresponding to 20 amino acids near C-terminus of human CTNNBL1.
Host	Rabbit
Reactivity	Human, Mouse, Rat
Specificity	CTNNBL1 antibody is predicted to not cross-react with other catenin family members. At least four isoforms of CTNNBL1 are known to exist; this antibody will detect all but isoform b.
Form	Liquid

Purification	Peptide affinity purification
Concentration	1 mg/mL
Recommend Usage	Western Blot (1 and 2 ug/mL) Immunohistochemistry (5 ug/mL) The optimal working dilution should be determined by the end user.
Storage Buffer	In PBS (0.02% sodium azide)
Storage Instruction	Store at 4°C for three months. For long term storage store at -20°C. Aliquot to avoid repeated freezing and thawing.
Note	This product contains sodium azide: a POISONOUS AND HAZARDOUS SUBSTANCE which should be handled by trained staff only.

Applications

- Western Blot (Tissue lysate)

Western blot analysis of CTNNBL1 in human brain tissue lysate with CTNNBL1 polyclonal antibody (Cat # PAB19409) at 1 ug/mL (lane 1) and 2 ug/mL (lane 2).

- Immunohistochemistry

Immunohistochemical staining of mouse brain cells with CTNNBL1 polyclonal antibody (Cat # PAB19409) at 5 ug/mL.

- Enzyme-linked Immunoabsorbent Assay

Gene Info — CTNNBL1

Entrez GeneID	56259
Protein Accession#	NP_110517
Gene Name	CTNNBL1
Gene Alias	C20orf33, FLJ21108, NAP, NYD-SP19, P14L, PP8304, dJ633O20.1
Gene Description	catenin, beta like 1
Omim ID	611537
Gene Ontology	Hyperlink

Gene Summary

The protein encoded by this gene contains an acidic domain, a putative bipartite nuclear localization signal, a nuclear export signal, a leucine-isoleucine zipper, and phosphorylation motifs. In addition, the encoded protein contains Armadillo/beta-catenin-like repeats, which have been implicated in protein-protein interactions. Although the function of this protein has not been determined, the C-terminal portion of the protein has been shown to possess apoptosis-inducing activity. [provided by RefSeq]

Other Designations

beta catenin-like 1|nuclear associated protein

Publication Reference

- [CTNNBL1 facilitates the association of CWC15 with CDC5L and is required to maintain the abundance of the Prp19 spliceosomal complex.](#)

Febe van Maldegem, Sarah Maslen, Christopher M. Johnson, Anita Chandra, Karuna Ganesh, Mark Skehel and Cristina Rada. Nucleic Acids Research 2015 Aug; 43(14):7058.

Application: WB, WB-Tr, Human, Mouse, U2OS, Splenic B cells

Disease

- [Asthma](#)
- [Birth Weight](#)
- [Cardiovascular Diseases](#)
- [Diabetes Mellitus](#)
- [Genetic Predisposition to Disease](#)
- [Obesity](#)
- [Tobacco Use Disorder](#)